

DamenCNC Quick start guide for connecting USBCNC ethernet

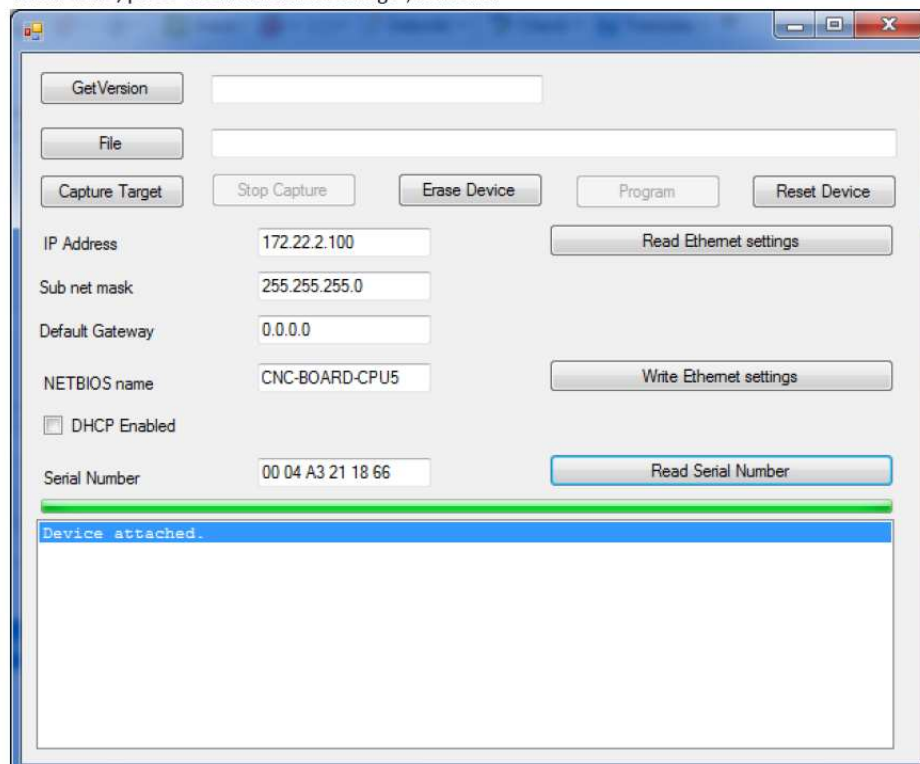
(A Short summary/checklist of what needs to be done in order to get USBCNC Ethernet version up and running, it references to several other manuals which need to be downloaded at EdingCNC)

1. Always test run the USB board or RTR controller in USB mode first, then you are 100% sure that the board and controller is working. (keep in mind USB firmware then needs to be on the board!)
2. Download the CPU5 Configurator and configurator manual from the EdingCNC website http://edingcnc.com/index.php?pagina=8_download
Read the manual prior to starting (it's any a few pages with pictures)
3. The firmware on the board needs to be changed from USB to Ethernet firmware, the programming of firmware is always done via the USB cable. There are currently two models of CPU with Ethernet. The CPU5A and the CPU 5B, make sure you download the firmware that corresponds to your CPU. For CPU5B there are also 2 versions, the difference between the two is the way the AMP enable signal switches. (at DamenCNC we use the Amp enable default at 0 Volt) Firmware can be downloaded here at the EdingCNC website http://edingcnc.com/index.php?pagina=8_download
4. Connect Board to the PC using USB cable, capture device using configurator tool, then write the new firmware to the board. (it is explained in more detail in the configurator manual)
- 5.

Verify using configurator tool, that the IP adres set to the device matches exactly with the USBCNC manual.

Set up the Ethernet settings

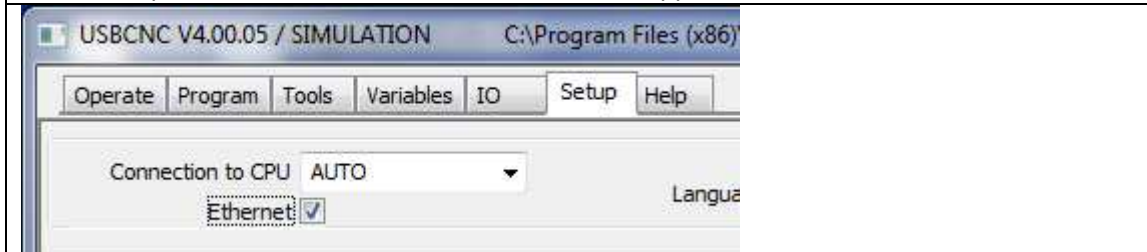
When done, press "Read Ethernet settings", it shows:



6. The final step is that the Network Settings in the PC need to be changed. Please make sure you follow the instructions from EdingCNC to the letter. Most common reason that Ethernet card does not get a connection is an incorrectly set network address.

7.

In the Setup tab of USBCNC check the Ethernet box, upper left corner of the screen



8. If all is correctly set the software will now start in normal mode, instead of simulation mode.

Trouble Shooting

- It might sounds trivial, but if you are not getting a connection, please check if the network cable is plugged in. (It happens even here , that someone forgets to plug it in)
- CPU5A board gets its power from the USB connection, when only using Ethernet, make sure you are using external power, or just connect also the USB cable, to provide power.
- Most common reason that Ethernet card does not get a connection is an incorrectly set network address, verify from the EdingCNC documentation that it is correctly set.
- In the Setup tab of USBCNC, the Ethernet checkbox is not checked?

This is the first version of this quick start guide, if you have questions please email info@damencnc.com and we can improve the document with your input.

Keep in mind this is only a quick start guide, that will assist you, the complete manual for USBCNC can be found here.

http://edingcnc.com/index.php?pagina=8_download

Greetings, Kevin Damen