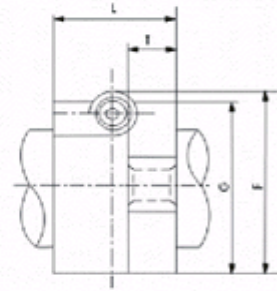
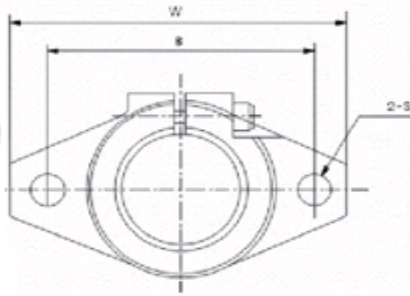


CNC Shaft Support



Type	8mm	12mm	16mm	20mm	25mm
Shaft Diameter	8	12	16	20	25
W	43	47	50	60	70
L	10	13	16	20	25
T	5	7	8	8	10
F	24	28	31	37	42
G	20	25	28	34	40
B	32	36	40	48	56
S	5.5	5.5	5.5	7	7
Locking Bolt	M4	M4	M4	M5	M5
Instal Bolt	M5	M5	M5	M6	M6
Weight grams	13	20	27	40	60