

4 x m6x24 DIN912 12.9  
(17Nm Tightening Torque)

RevNo

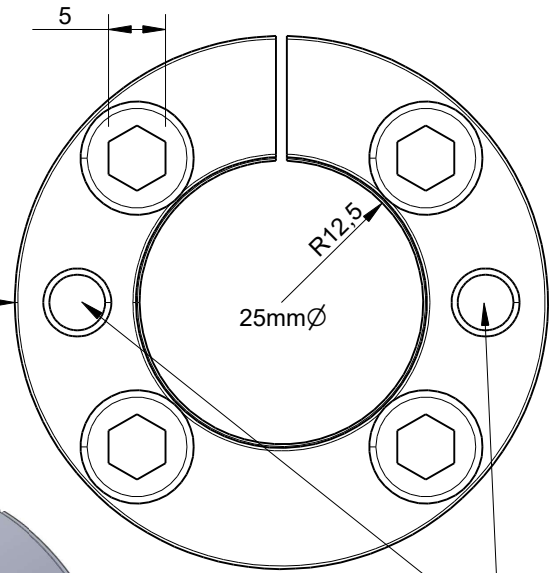
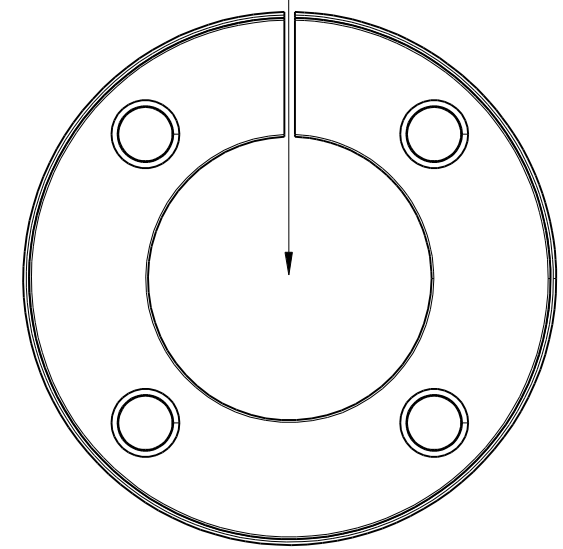
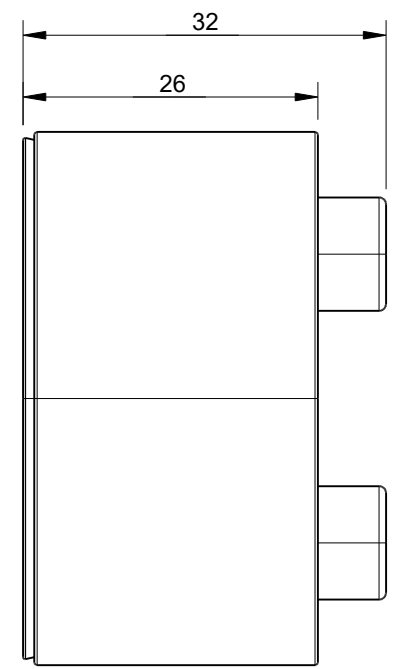
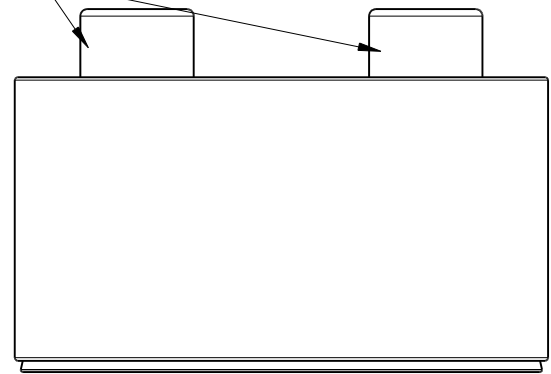
Revision note

Date

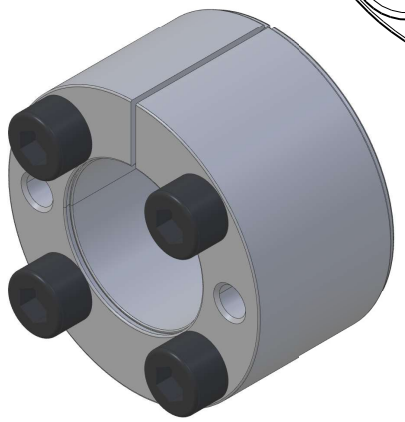
Signature

Checked

Maximum transferable torque 299 Nm (Mt)  
Maximum transferable axial force 24 kN (Faxial)



Remove the 4 bolts, and screw 2 back in these threads to release the cone clamping



Units mm, Tolerances +/-0.1mm

|                         |            |  |           |                   |                       |  |
|-------------------------|------------|--|-----------|-------------------|-----------------------|--|
| Itemref                 | Quantity   | Title/Name, designation, material, dimension etc |           |                   | Article No./Reference |  |
| Drawn by<br>Kevin Damen | Checked by | Approved by - date                               | File name | Date<br>11-8-2023 | Scale<br>3:2          |  |

**2673**

[www.damencnc.com](http://www.damencnc.com)

|   |  |         |                 |
|---|--|---------|-----------------|
| 2673 Locking Assembly<br>BK61 d x D x 25x47 Lt=32mm |  | Edition | Sheet<br>1 OF 1 |
|---|--|---------|-----------------|