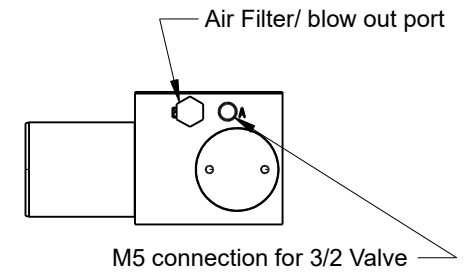
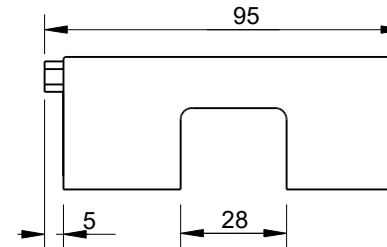
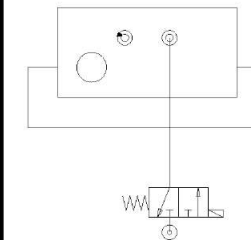


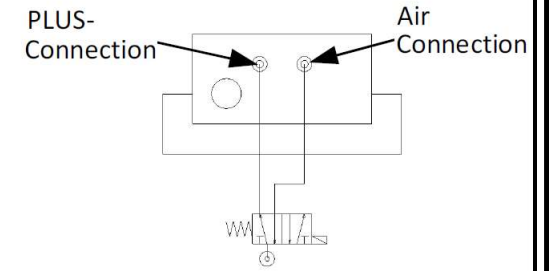
M8x1.25 Metric Coarse Thread  
Use bolts with at least quality class 8.8  
Recommended tightening torque 23Nm



Standard -Connection



PLUS -Connection



Units: mm  
Tolerances: +/-0.1mm unless otherwise specified

Technical Data	
Holding Force 3/2 valve (passive clamping)	1050N
Holding force 5/2 valve (active clamping PLUS)	2600N
Installation direction	from above
Operating Pressure	6.0 (bar)
MAX Operating Pressure	6.5 (bar)
Jaw opening pressure	5.5 (bar)
Max clamping length	68mm
Type of operation (Normally open or closed)	NC
Air consumption per cycle at 6bar (3/2 / 5/2)	31/121cm <sup>3</sup>

Itemref	Quantity	Title/Name, designation, material, dimension etc			Article No./Reference	
Drawn by Cas Jansen	Checked by Kevin Damen	Approved by - date 12-10-2020	File name	Date 6-10-2020	Scale 1:2	
3277			www.damencnc.com			
			3277 Pneumatic Clamping Element MKS3001A	Edition	Sheet 1 OF 1	