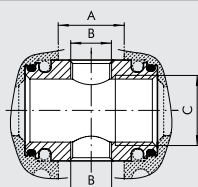


The air take-off is a connecting element that is mounted between two Syntesi® modules. The 2-way version, made of metal and having restrained dimensions, has a threaded port upwards and one downwards. The 4-way version, in technopolymer, has a threaded port on each side. This gives or four additional air outlets for use as required. All Syntesi® modules come with two threaded ports, one on the front and one on the back, for use as air take-off.



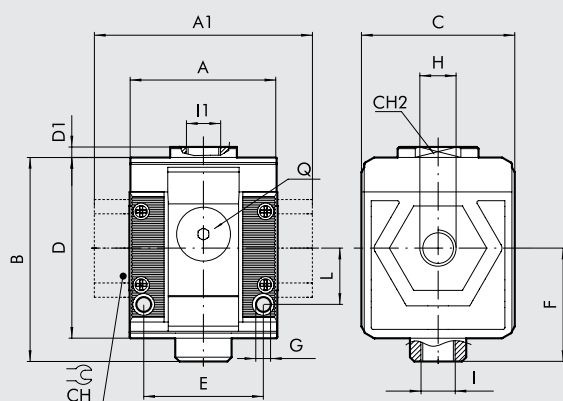
| TECHNICAL DATA | AIR TAKE-OFF | | AIR INTAKE, 4-WAY | |
|--|---|-------------|-----------------------|-------------------------|
| | SIZE 1 | SIZE 2 | SIZE 1 | SIZE 2 |
| Flow rate of the air take-off at 6.3 bar (0.63 MPa; 91 psi) ΔP 1 bar (0.1 MPa; 14 psi) NL/min scfm | 1550 55 | 7000 248 | 500 - 2000 18 - 71 | 1500 - 4500 53 - 160 |
| Usage temperature and pressure | Given by the Syntesi® modules it's connected to | | | |
| Weight | 62 | 75 | 100 | 306 |
| Fluid | Compressed air or other inert gases | | | |

DIMENSIONS 2 WAY-VERSION



| | SIZE 1 | SIZE 2 |
|---|--------|--------|
| A | 15.5 | 27 |
| B | 1/8" | 3/8" |
| C | 3/8" | 1/2" |

DIMENSIONS 4 WAY-VERSION



| | SIZE 1 | | | SIZE 2 | | | |
|------------------------------|--------------------|------|------|--------------------|------|------|----|
| H (threaded port) | 1/8" | 1/4" | 3/8" | 3/8" | 1/2" | 3/4" | 1" |
| A | 42 | | | 61 | | | |
| A1 | - | - | 44 | - | - | 95 | 95 |
| B | 58 | | | 81 | | | |
| C | 44 | | | 61 | | | |
| CH | - | | | - | - | 32 | 36 |
| CH2 | 19 | | | - | | | |
| D | 51.5 | | | 70.5 | | | |
| D1 | 3 | | | - | | | |
| E | 33.5 | | | 47.5 | | | |
| F | 32.2 | | | 42.7 | | | |
| G | Hole for M4 screws | | | Hole for M5 screws | | | |
| I | 1/8" | | | 1/4" | | | |
| I1 | 1/4" | | | 3/8" | | | |
| L | 16 | | | 22.5 | | | |
| Q (no. 2 add. air takes-off) | 1/8" | | | 1/4" | | | |

KEY TO CODE FOR 4-WAY VERSION

| 56 | 1 | 1 | P | 10 | 1 |
|------------|----------|---|----------------|----------|---|
| SYNTESI | SIZE | THREADED INPUT CONNECTION | ELEMENT | TYPE | THREADED OUTPUT CONNECTION |
| 56 Syntesi | 1 Size 1 | 0 Without bushing 1 1/8" port 2 1/4" port 3 3/8" port | P Air take-off | 20 4-way | 0 Without bushing 1 1/8" port 2 1/4" port 3 3/8" port |
| | 2 Size 2 | 0 Without bushing 3 3/8" port 4 1/2" port 5 3/4" port 6 1" port | | | 0 Without bushing 3 3/8" port 4 1/2" port 5 3/4" port 6 1" port |

PURCHASE ORDER CODES HAVING A MORE FREQUENT USE CODES

| Code | Description |
|---------------------------|-------------|
| AIR INTAKE, 2-way version | |
| 5610P100 | PA SY1 |
| 5620P100 | PA SY2 |

AIR INTAKE, 4-way version

| | |
|----------|------------------------------|
| 5610P200 | PA 4-way SY1 without bushing |
| 5611P201 | PA 4-way SY1 1/8 |
| 5612P202 | PA 4-way SY1 1/4 |
| 5613P203 | PA 4-way SY1 3/8 |
| 5620P200 | PA 4-way SY2 without bushing |
| 5623P203 | PA 4-way SY2 3/8 |
| 5624P204 | PA 4-way SY2 1/2 |
| 5625P205 | PA 4-way SY2 3/4 |
| 5626P206 | PA 4-way SY2 1 |

N.B. Besides the below mentioned codes, you can order elements composed at your will according to the key to codes.