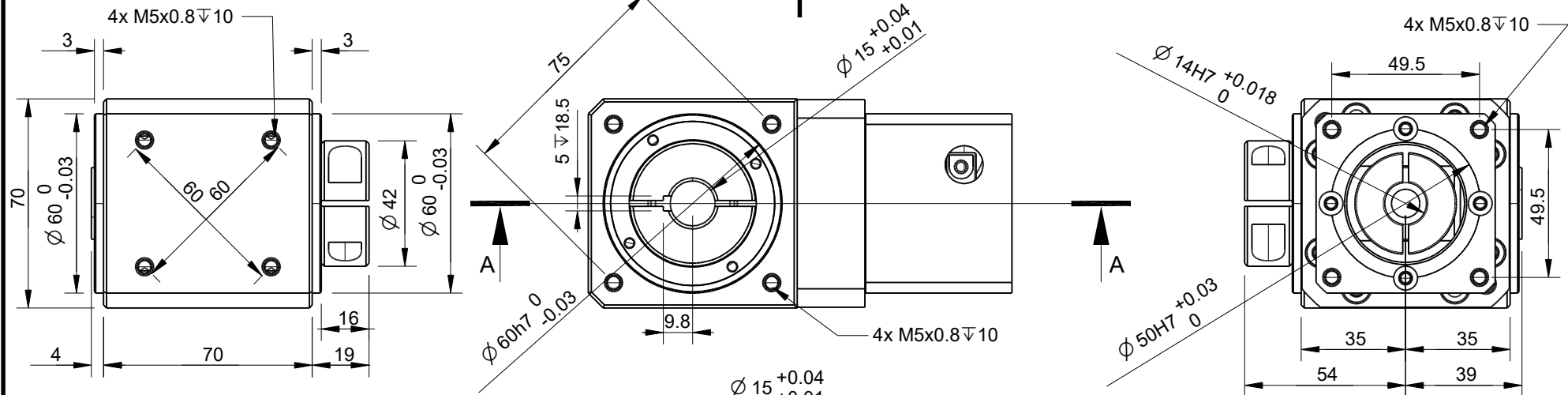
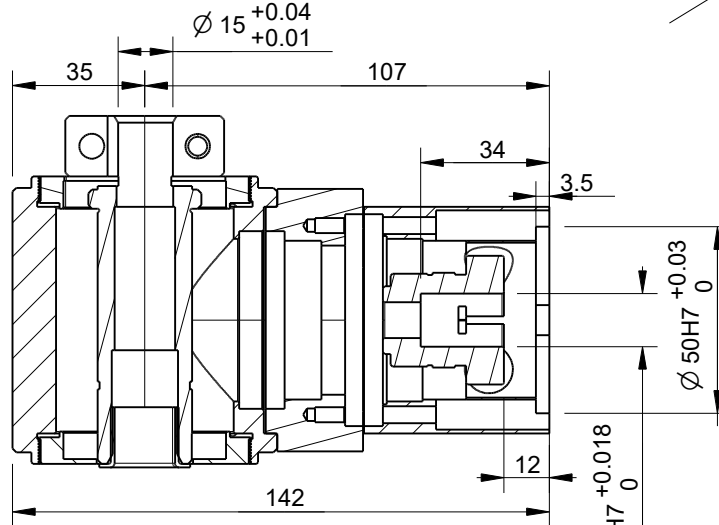


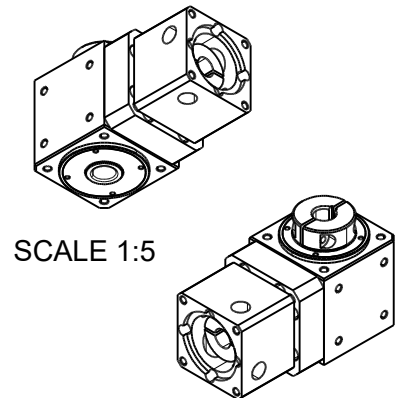
RevNo	Revision note	Date	Signature	Checked
-------	---------------	------	-----------	---------



Nominal Output Torque	44.1	Nm
	390	Lb-in
Max. Acceleration Torque	3 Times Nominal Output Torque	
Emergency Stop Torque	3.4 times Nominal Output Torque	
Permissible Input Speed	3000	RPM
Gear Ratio	20	
Standard Max Backlash	<3	Arcmin
Max. radial force	843	N
	189	Lbf
Max. axial force	422	N
	95	Lbf
Rated Life	>10,000	Hours
Operating Temperature Range	-10°C + 40°C ambient - 90°C max. operating case temperature	
Lubrication	Lubricated for Life (synthetic grease)	
Degree of Protection	IP54	
Gearhead Inertia	0.127	Kg-cm2
Efficiency at full load	85%	
Weight	2.5	Kg
No-load running torque	0.3	N
	2.6	Lb-in



Section A-A



Itemref	Quantity	Title/Name, designation, material, dimension etc			Article No./Reference	
Drawn by Cas Jansen	Checked by Kevin Damen	Approved by - date 9-8-2022	File name	Date 9-8-2022	Scale 1:2	

# 5085

[www.damencnc.com](http://www.damencnc.com)

5085 DCNC-RAG-F70 I=20 Right Angle Gearbox (60x60mm)	Edition	Sheet 1 OF 1
--	---------	-----------------

Units	mm
Tolerances	± 0.1mm unless otherwise specified