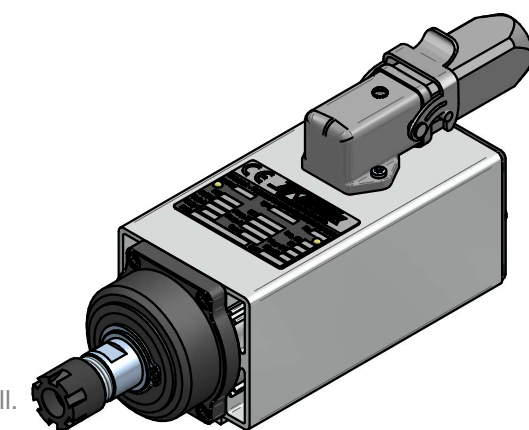


Ghiera serraggio
GTSM16 RH

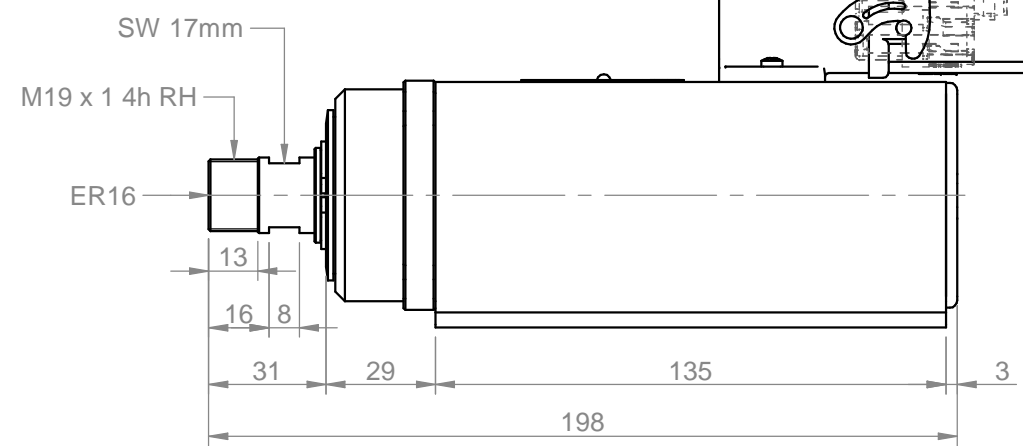
4 X M6 (prof.=7)



Connettore elettrico Harting
custodia volante uscita dritta all.
- 09200031440

Connettore elettrico Harting
frutto F 5P+T coll. a crimp. -
09120053101

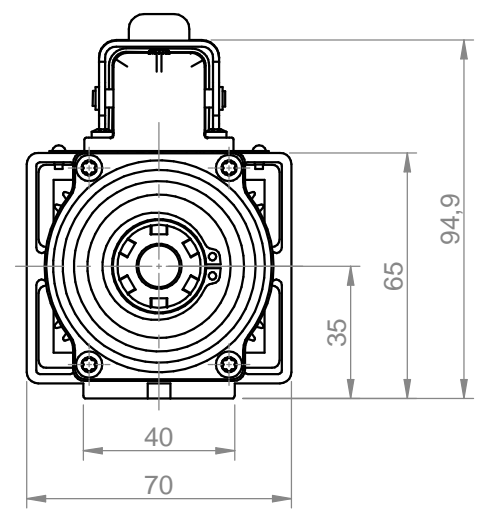
Connettore elettrico Harting
custodia fissa angolo 90° all.



SW 17mm

M19 x 1 4h RH

ER16



Power [kW] 0.33	Duty Cycle S1	Base speed [rpm] 18000	Base freq. [Hz] 300	Base voltage Δ [V] 220	Base voltage Y [V]	Protection IP54	Ins. Cl. F
Min speed [rpm] 9000		Max speed [rpm] 18000	Max freq. [Hz] 300	Absorb. Δ [A] 2.1	Absorb. Y [A]	Part number on nameplate COMNC350437	
Balancing according to ISO 1940 - G2.5 @ 18000 rpm		Balancing type		tool type full key	tool type half key	Peso / weight 2.45 kg	
Tolleranze non quotate: UNI EN 22768 fH Smussi non quotati: 0.5mm				$\nabla = 0.8 \nabla$	$\nabla = 3.2 \nabla$	$\nabla = 12.5 \nabla$	$\sim = \nabla$
rev. n° 00	description Emissione			date 13/01/2020	signature D. Bottarel	Title NC35-A-SB-P-ER16-RH	
Customer Catalogo						Drawing code COMNC350437	
drawn - date D. Bottarel - 13/01/2020	approved - date S. Perli - 13/01/2020	checked - date S. Perli - 13/01/2020	sostituisce il sostituito dal		foglio / sheet 1 / 1	scala 1:2	A4



Teknomotor S.r.l.
Via Argenege 31, I-32038 Quero Vas (BL)
www.teknomotor.com