

1

2

3

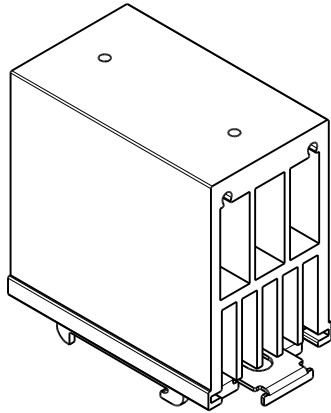
4

5

6

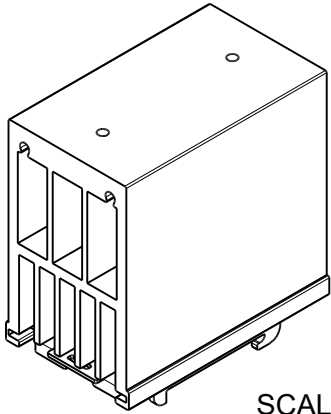
| | | | | |
|-------|---------------|------|-----------|---------|
| RevNo | Revision note | Date | Signature | Checked |
|-------|---------------|------|-----------|---------|

A



SCALE 1:2

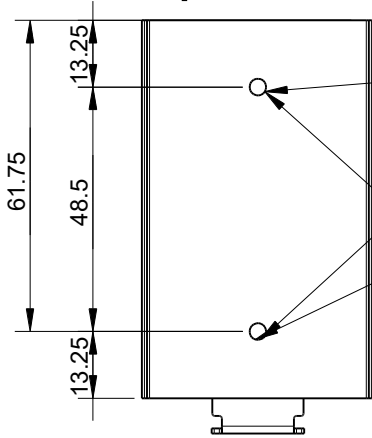
B



SCALE 1:2

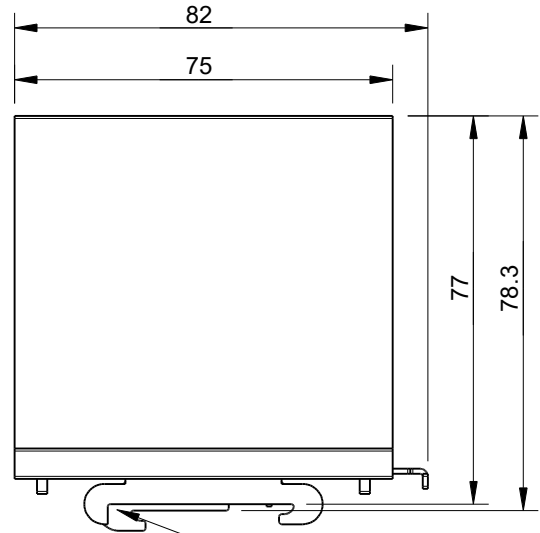
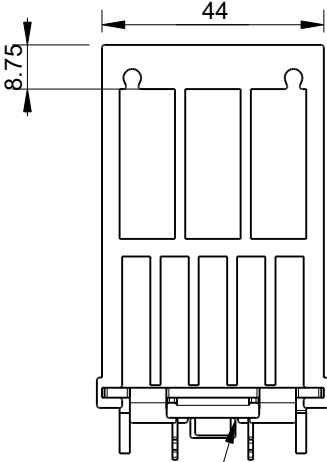
C

D



2x M4 x 8.75

Suitable for SSR relays 15 Amps (697) to 40 Amps (5493)



DIN Rail mount system
 Compatible with Perforated DIN Rail NS 35/7,5 (1436)
 Perforated DIN Rail NS 35/15 (3096)

| | | | | | |
|------------------------|---------------------------|--|-----------|-------------------|-----------------------|
| Itemref | Quantity | Title/Name, designation, material, dimension etc | | | Article No./Reference |
| Drawn by Cas Jansen | Checked by Kevin Damen | Approved by - date 28-9-2021 | File name | Date 28-9-2021 | Scale 1:1.5 |

| | |
|------------|------------------------------------|
| Units | mm |
| Tolerances | ± 0.2mm unless otherwise specified |

5494

www.damencnc.com

5494 DIN Rail Mountable Heatsink for Solid State Relay (SSR) 15-40Amps
 Edition
 Sheet
 1 OF 1

1

2

3

4

5

6