

Device connector, front mounting - PV-FT-C4F-C-6-130-BU-00



1158448

<https://www.phoenixcontact.com/pc/products/1158448>

Please be informed that the data shown in this PDF document is generated from our Online Catalog. Please find the complete data in the user documentation. Our General Terms of Use for Downloads are valid.



Panel feed-through, Range of articles: Sunclix, Device connector, front mounting, housing material: PPE, color: black, number of positions: 1, rated voltage: 1500 V DC, Connection method: Crimp, Type of contact: Socket

Commercial Data

Item number	1158448
Packing unit	50 pc
Minimum order quantity	50 pc
Product Key	ABLBA
GTIN	4063151163976
Weight per Piece (including packing)	15.21 g
Weight per Piece (excluding packing)	15.21 g
Customs tariff number	85444290
Country of origin	DE

Device connector, front mounting - PV-FT-C4F-C-6-130-BU-00



1158448

<https://www.phoenixcontact.com/pc/products/1158448>

Technical Data

Notes

Safety note

Safety note

- **WARNING:** Commission properly functioning products only. The products must be regularly inspected for damage. Decommission defective products immediately. Replace damaged products. Repairs are not possible.
- **WARNING:** Only electrically qualified personnel may install and operate the product. They must observe the following safety notes. The qualified personnel must be familiar with the basics of electrical engineering. They must be able to recognize and prevent danger. The relevant symbol on the packaging indicates that only personnel familiar with electrical engineering are allowed to install and operate the product.
- **WARNING:** The connectors may not be plugged in or disconnected under load. Ignoring the warning or improper use may damage persons and/or property.
- The products are suitable for applications in plant, controller, and electrical device engineering.
- Assembled products may not be manipulated or improperly opened.
- Only use mating connectors that are specified in the technical data of the standards listed (e.g. the ones listed in the product accessories online at [phoenixcontact.com/products](https://www.phoenixcontact.com/products)).
- When using the product in direct connection with third-party manufacturers, the user is responsible.
- For operating voltages > 50 V AC, conductive connector housings must be grounded
- Ensure that the protective or functional ground has been properly connected.
- Observe the corresponding technical data. You will find information:
 - o On the product
 - o On the packing label
 - o In the supplied documentation
 - o Online at [phoenixcontact.com/products](https://www.phoenixcontact.com/products) under the product
- The installation notes/Design In documents online on the download page at [phoenixcontact.com/products](https://www.phoenixcontact.com/products) must be observed for this product.
- Use a protective cap to protect connectors that are not in use. The suitable accessories are available online in the accessory section of the product at [phoenixcontact.com/products](https://www.phoenixcontact.com/products)
- The connector warms up in normal operation. Depending on the ambient conditions, the surface of the connector can continue to warm up. In this case, the user is responsible for posting warnings (e.g. DIN EN ISO 13732-1:2008-12).
- Operate the connector only when it is fully plugged in and interlocked.
- Ensure that when laying the cable, the tensile load on the connectors does not exceed the upper limit specified in the standards.

Device connector, front mounting - PV-FT-C4F-C-6-130-BU-00



1158448

<https://www.phoenixcontact.com/pc/products/1158448>

- Observe the minimum bending radius of the cable. Lay the cable without twisting it.

Product properties

Product type	Panel feed-through
Number of positions	1
Insertion force	< 45 N ±10 N

Insulation characteristics

Protection class	II
Degree of pollution	2

Dimensions

Width	21 mm
Height	21 mm
Length	49.1 mm

Electrical properties

Rated voltage (III/2)	1500 V
Nominal voltage ATD	1500 V DC in accordance with IEC 62852:2014/AMD1:2020
Rated surge voltage	16 kV
Rated surge voltage (III/3)	16 kV
Rated current (6.0 mm ²)	38 A (in accordance with IEC 62852:2014/AMD1:2020)
Contact resistance	< 0.45 mΩ (depending on the mating connector used)

Mechanical properties

Mechanical data

Insertion force	< 45 N ±10 N
-----------------	--------------

Material specifications

Color	black
Color of the housing part	black
Material	PPE
Flammability rating according to UL 94	V0
Insulating material group	II
Seal material	EPDM
O-ring material	Silopren
Cable gland material	PA
Housing material	PPE

Connector

Insertion/withdrawal cycles	100
-----------------------------	-----

Ambient conditions

Degree of protection	IP66 / IP68 (2m / 24h) (plugged in)
----------------------	-------------------------------------

Device connector, front mounting - PV-FT-C4F-C-6-130-BU-00



1158448

<https://www.phoenixcontact.com/pc/products/1158448>

	IP20 (Not plugged in)
Degree of protection	IP66 / IP68 (2 m / 24 h)
Ambient temperature (operation)	-40 °C ... 85 °C
Ambient temperature (assembly)	-25 °C ... 50 °C

Standards and regulations

Standards/specifications	IEC 62852:2014/AMD1:2020
--------------------------	--------------------------

Device connector, front mounting - PV-FT-C4F-C-6-130-BU-00



1158448

<https://www.phoenixcontact.com/pc/products/1158448>

Classifications

ECLASS

ECLASS-11.0	27440107
-------------	----------

ETIM

ETIM 8.0	EC002635
----------	----------

UNSPSC

UNSPSC 21.0	39121400
-------------	----------

Device connector, front mounting - PV-FT-C4F-C-6-130-BU-00



1158448
<https://www.phoenixcontact.com/pc/products/1158448>

Environmental Product Compliance

China RoHS	Environmentally friendly use period: unlimited = EFUP-e
	No hazardous substances above threshold values

Device connector, front mounting - PV-FT-C4F-C-6-130-BU-00



1158448

<https://www.phoenixcontact.com/pc/products/1158448>

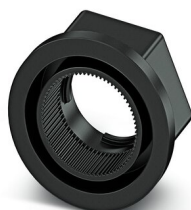
Accessories

Screw connection

Screw connection - PV-FT-C-WALLMOUNT BK - 1146092

<https://www.phoenixcontact.com/pc/products/1146092>

Panel feed-through, Range of articles: Sunclix, Screw connection



Protective cap

Protective cap - PV-C PROTECTION CAP - 1785430

<https://www.phoenixcontact.com/pc/products/1785430>

Photovoltaic connector, Range of articles: Sunclix, Protective cap, color: black. self-sealing, without interlock, set consisting of: 1 protective cap for connector side and 1 protective cap for coupling side



Phoenix Contact 2022 © - all rights reserved

<https://www.phoenixcontact.com>

PHOENIX CONTACT GmbH & Co. KG

Flachmarktstraße 8

D-32825 Blomberg

+49 (0) 5235-3 00

info@phoenixcontact.com