

# Contact insert module - HC-M-08-PT-M



1424227

<https://www.phoenixcontact.com/us/products/1424227>

Please be informed that the data shown in this PDF document is generated from our Online Catalog. Please find the complete data in the user documentation. Our General Terms of Use for Downloads are valid.



Contact insert module, number of positions: 8, power contacts: 8, control contacts: 0, Pin, Push-in connection, 400 V, 16 A, 0.5 mm<sup>2</sup> ... 2.5 mm<sup>2</sup>, application: Power

## Your advantages

- Easy installation without tools, even when mounted, with push-in connection technology
- Shortest installation time compared to other connection technologies
- Quick and effortless wiring, in particular when space is tight
- Automatic cabling with robots possible
- Safe wiring and operation with color-coded actuators
- Shock and vibration-resistant in accordance with DIN EN 61373

## Commercial Data

Item number	1424227
Packing unit	1 pc
Minimum order quantity	1 pc
Sales Key	B10
Product Key	BF7ACE
Catalog Page	Page 577 (C-2-2019)
GTIN	4055626369587
Weight per Piece (including packing)	22.48 g
Weight per Piece (excluding packing)	20.66 g
Customs tariff number	85366990
Country of origin	CN

# Contact insert module - HC-M-08-PT-M



1424227

<https://www.phoenixcontact.com/us/products/1424227>

## Technical Data

### Notes

General	for flexible conductors with or without ferrules
General	Connectors may be operated only when there is no load/voltage.
General	Flexible conductors may be used without ferrules as long as they comply with IEC 60228 Class 1 ... 5. The individual litz wires must have a min. diameter of 0.17 mm.
General	For HEAVYCON housing type B6 ... B48 and module carrier frame HC-M-B...MF-...

### Product properties

Product type	Modular contact insert
Number of positions	8
Connection profile	8
Application	Power
Number of module slots	1
No. of power contacts	8
No. of control contacts	0
Contact type	turned
Series	HC-M-08

### Insulation characteristics

Overvoltage category	III
Degree of pollution	3

### Connection data

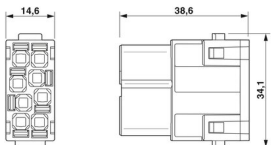
#### Connection technology

Connection technology	Push-in connection
-----------------------	--------------------

#### Conductor connection

Conductor cross section	0.5 mm <sup>2</sup> ... 2.5 mm <sup>2</sup>
Connection cross section AWG	20 ... 14
Stripping length of the individual wire	10 mm

### Dimensions

Dimensional drawing	
Width	34.1 mm
Height	39 mm
Length	14.6 mm

# Contact insert module - HC-M-08-PT-M



1424227

<https://www.phoenixcontact.com/us/products/1424227>

## Mechanical characteristics

Contact diameter	2.5 mm
------------------	--------

## Electrical properties

Rated voltage (III/2) contacts	690 V
Rated voltage (III/3)	400 V
Rated surge voltage (III/2)	4 kV
Rated surge voltage (III/3)	6 kV
Rated surge voltage	4 kV
Rated current	16 A (power contacts)

## Material specifications

Flammability rating according to UL 94	V0
Contact material	Copper alloy
Contact surface material	Ag
Contact carrier material	PC

## Connector

Insertion/withdrawal cycles	≥ 500
-----------------------------	-------

## Cable / line

Stripping length of the individual wire	10 mm
---	-------

## Mounting

Assembly instructions	To ensure correct use, installation in housing with IP54 protection or better is required
-----------------------	---

## Ambient conditions

Ambient temperature (operation)	-40 °C ... 125 °C
---------------------------------	-------------------

# Contact insert module - HC-M-08-PT-M

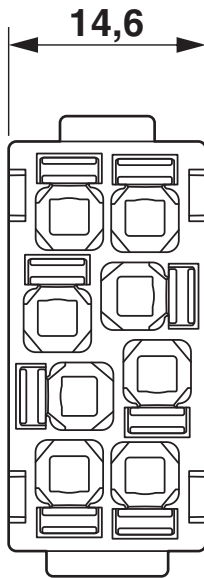


1424227

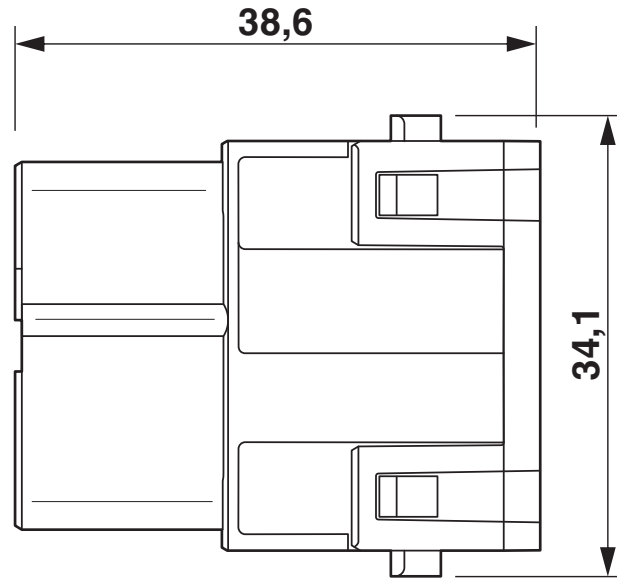
<https://www.phoenixcontact.com/us/products/1424227>

## Drawings

Dimensional drawing



Dimensional drawing



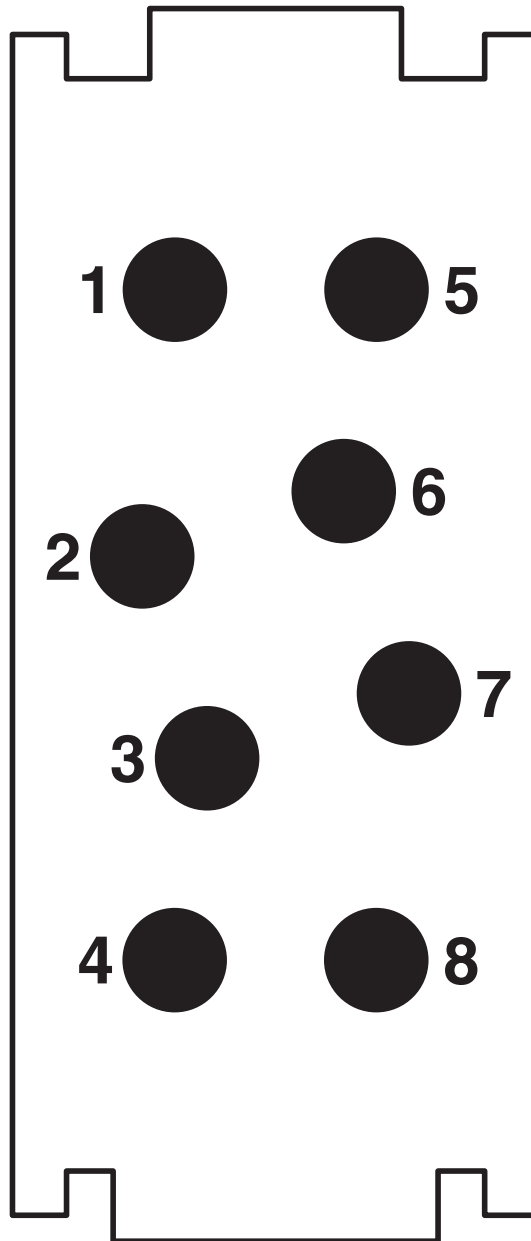
# Contact insert module - HC-M-08-PT-M

1424227

<https://www.phoenixcontact.com/us/products/1424227>



Schematic diagram

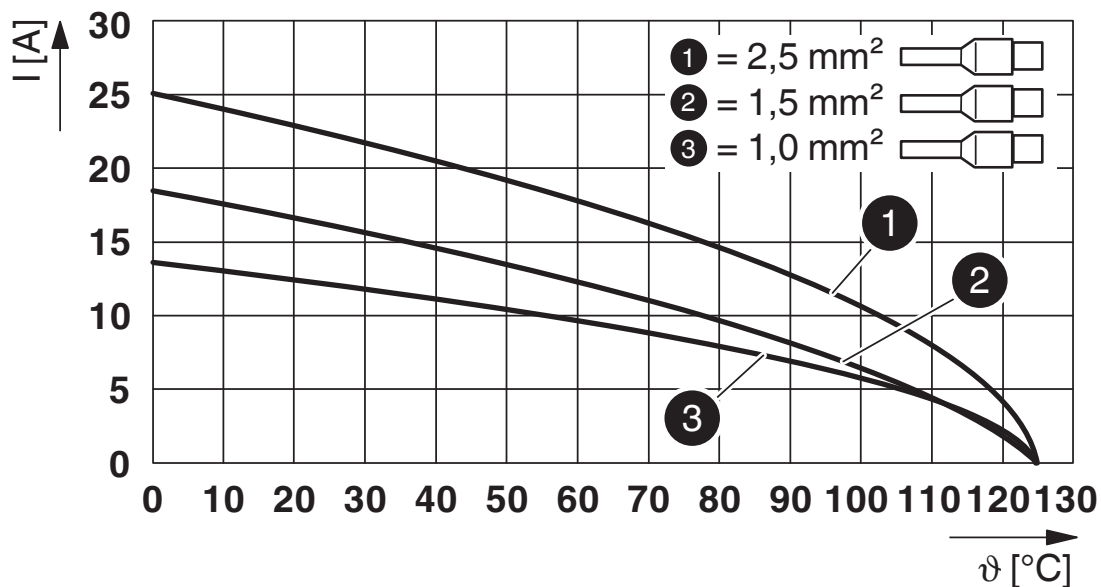


Connector pin assignment, connection side

1424227

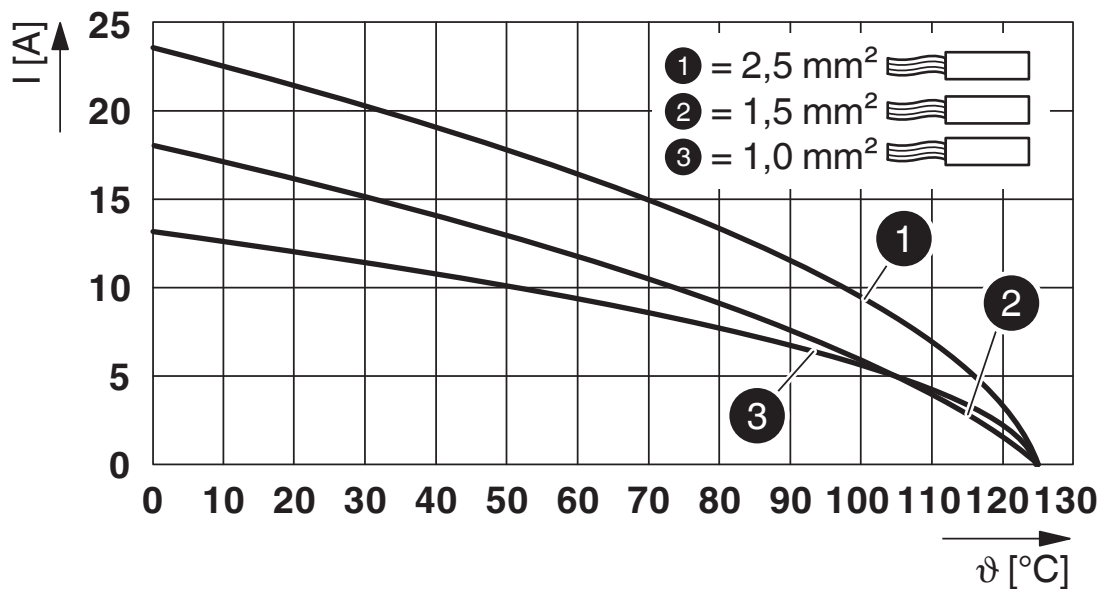
<https://www.phoenixcontact.com/us/products/1424227>

Diagram



Derating diagram for flexible conductors with ferrule

Diagram



Derating diagram for flexible conductors

# Contact insert module - HC-M-08-PT-M



1424227

<https://www.phoenixcontact.com/us/products/1424227>

## Approvals



**EAC**

Approval ID: RU C-DE.AI30.B.01102



**EAC**

Approval ID: RU C-DE.BL08.B.00511



**UL Recognized**

Approval ID: E468743

	Nominal Voltage $U_N$	Nominal Current $I_N$	Cross Section AWG	Cross Section $\text{mm}^2$
	600 V	16 A	- 14	-

# Contact insert module - HC-M-08-PT-M



1424227

<https://www.phoenixcontact.com/us/products/1424227>

## Classifications

### ECLASS

ECLASS-9.0	27440217
ECLASS-10.0.1	27440217
ECLASS-11.0	27440217

### ETIM

ETIM 8.0	EC000438
----------	----------

### UNSPSC

UNSPSC 21.0	39121400
-------------	----------



# Contact insert module - HC-M-08-PT-M



1424227

<https://www.phoenixcontact.com/us/products/1424227>

## Environmental Product Compliance

China RoHS	Environmentally friendly use period: unlimited = EFUP-e
	No hazardous substances above threshold values

# Contact insert module - HC-M-08-PT-M

1424227

<https://www.phoenixcontact.com/us/products/1424227>

## Accessories

### Coding element

Coding element - HC-CBU-MOD - 1636130

<https://www.phoenixcontact.com/us/products/1636130>

Coding socket for coding up to 16 connectors, for HC Modular



### Coding element

Coding element - HC-CST-MOD - 1636127

<https://www.phoenixcontact.com/us/products/1636127>

Coding peg for coding up to 16 connectors, for HC Modular



# Contact insert module - HC-M-08-PT-M

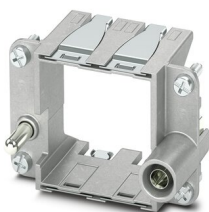
1424227

<https://www.phoenixcontact.com/us/products/1424227>

## Module carrier frame

Module carrier frame - HC-M-B06-MFH-B - 1182085

<https://www.phoenixcontact.com/us/products/1182085>



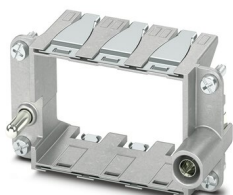
Module carrier frame, size: B6, type : for the panel mounting side (a, b, c, ...), 4 mm<sup>2</sup> ... 6 mm<sup>2</sup>, application: Module carrier frame

---

## Module carrier frame

Module carrier frame - HC-M-B10-MFH-B - 1182088

<https://www.phoenixcontact.com/us/products/1182088>



Module carrier frame, size: B10, type : for the panel mounting side (a, b, c, ...), 4 mm<sup>2</sup> ... 6 mm<sup>2</sup>, application: Module carrier frame

# Contact insert module - HC-M-08-PT-M

1424227

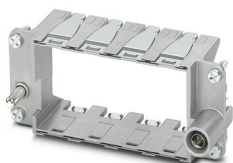
<https://www.phoenixcontact.com/us/products/1424227>

## Module carrier frame

Module carrier frame - HC-M-B16-MFH-B - 1182090

<https://www.phoenixcontact.com/us/products/1182090>

Module carrier frame, size: B16, type : for the panel mounting side (a, b, c, ...), 4 mm<sup>2</sup> ... 6 mm<sup>2</sup>, application: Module carrier frame



---

## Module carrier frame

Module carrier frame - HC-M-B24-MFH-B - 1182094

<https://www.phoenixcontact.com/us/products/1182094>

Module carrier frame, size: B24, type : for the panel mounting side (a, b, c, ...), 4 mm<sup>2</sup> ... 6 mm<sup>2</sup>, application: Module carrier frame



# Contact insert module - HC-M-08-PT-M

1424227

<https://www.phoenixcontact.com/us/products/1424227>

## Module carrier frame

Module carrier frame - HC-M-B06-MFH-H - 1182087

<https://www.phoenixcontact.com/us/products/1182087>



Module carrier frame, size: B6, type : for the sleeve side (A, B, C, ...), 4 mm<sup>2</sup> ... 6 mm<sup>2</sup>, application: Module carrier frame

---

## Module carrier frame

Module carrier frame - HC-M-B10-MFH-H - 1182089

<https://www.phoenixcontact.com/us/products/1182089>



Module carrier frame, size: B10, type : for the sleeve side (A, B, C, ...), 4 mm<sup>2</sup> ... 6 mm<sup>2</sup>, application: Module carrier frame

# Contact insert module - HC-M-08-PT-M

1424227

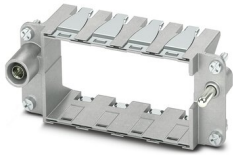
<https://www.phoenixcontact.com/us/products/1424227>

## Module carrier frame

Module carrier frame - HC-M-B16-MFH-H - 1182093

<https://www.phoenixcontact.com/us/products/1182093>

Module carrier frame, size: B16, type : for the sleeve side (A, B, C, ...), 4 mm<sup>2</sup> ...  
6 mm<sup>2</sup>, application: Module carrier frame



---

## Module carrier frame

Module carrier frame - HC-M-B24-MFH-H - 1182095

<https://www.phoenixcontact.com/us/products/1182095>

Module carrier frame, size: B24, type : for the sleeve side (A, B, C, ...), 4 mm<sup>2</sup> ...  
6 mm<sup>2</sup>, application: Module carrier frame



# Contact insert module - HC-M-08-PT-M

1424227

<https://www.phoenixcontact.com/us/products/1424227>

## Crimping pliers

Crimping pliers - CRIMPFOX CENTRUS 6S - 1213144

<https://www.phoenixcontact.com/us/products/1213144>



Crimping pliers, for uninsulated and insulated ferrules, DIN 46228 Part 1 and 4, from 0.14 mm<sup>2</sup> ... 6 mm<sup>2</sup>, also for TWIN ferrules up to 2 x 4 mm<sup>2</sup>, automatic cross section adjustment, lateral insertion, equipped with fall protection

---

## Crimping pliers

Crimping pliers - CRIMPFOX 6 - 1212034

<https://www.phoenixcontact.com/us/products/1212034>



Crimping pliers, for ferrules without insulating collar according to DIN 46228 Part 1 and ferrules with insulating collar according to DIN 46228 Part 4, 0.25 mm<sup>2</sup> ... 6.0 mm<sup>2</sup>, lateral entry, trapezoidal crimp

# Contact insert module - HC-M-08-PT-M



1424227

<https://www.phoenixcontact.com/us/products/1424227>

## Electrical crimping tool

Electrical crimping tool - CF CRIMPHANDY 0,5 - 1212463

<https://www.phoenixcontact.com/us/products/1212463>



Mobile handheld device, battery-powered, for processing on-tape ferrules 0.5 mm<sup>2</sup> with functional end, suitable for PVC insulated conductors (H05V-K), incl. battery, charger, CUTFOX 12 cable cutter, waste guide plate 2, service tool for error correction, and one strip of ferrules 0.5 mm<sup>2</sup>, packed in a robust case.

---

## Electrical crimping tool

Electrical crimping tool - CF CRIMPHANDY 0,75 - 1212464

<https://www.phoenixcontact.com/us/products/1212464>



Mobile handheld device, battery-powered, for processing on-tape ferrules 0.75 mm<sup>2</sup> with functional end, suitable for PVC insulated conductors (H05V-K), incl. battery, charger, CUTFOX 12 cable cutter, waste guide plate 2, service tool for error correction, and one strip of ferrules 0.75 mm<sup>2</sup>, packed in a robust case.



# Contact insert module - HC-M-08-PT-M



1424227

<https://www.phoenixcontact.com/us/products/1424227>

## Electrical crimping tool

Electrical crimping tool - CF CRIMPHANDY 1,0 - 1212465

<https://www.phoenixcontact.com/us/products/1212465>



Mobile handheld device, battery-powered, for processing on-tape ferrules 1.0 mm<sup>2</sup> with functional end, suitable for PVC insulated conductors (H05V-K), incl. battery, charger, CUTFOX 12 cable cutter, waste guide plate 2, service tool for error correction, and one strip of ferrules 1.0 mm<sup>2</sup>, packed in a robust case.

---

## Electrical crimping tool

Electrical crimping tool - CF CRIMPHANDY 1,5 - 1212466

<https://www.phoenixcontact.com/us/products/1212466>



Mobile handheld device, battery-powered, for processing on-tape ferrules 1.5 mm<sup>2</sup> with functional end, suitable for PVC insulated conductors (H07V-K), incl. battery, charger, CUTFOX 12 cable cutter, waste guide plate 2, service tool for error correction, and one strip of ferrules 1.5 mm<sup>2</sup>, packed in a robust case.

# Contact insert module - HC-M-08-PT-M



1424227

<https://www.phoenixcontact.com/us/products/1424227>

## Contact insert module

Contact insert module - HC-M-08-PT-F - 1424226

<https://www.phoenixcontact.com/us/products/1424226>



Contact insert module, number of positions: 8, power contacts: 8, control contacts: 0, Socket, Push-in connection, 400 V, 16 A, 0.5 mm<sup>2</sup> ... 2.5 mm<sup>2</sup>, application: Power

---

Phoenix Contact 2022 © - all rights reserved

<https://www.phoenixcontact.com>

Phoenix Contact USA  
586 Fulling Mill Road  
Middletown, PA 17057, United States  
(+717) 944-1300  
[info@phoenixcon.com](mailto:info@phoenixcon.com)