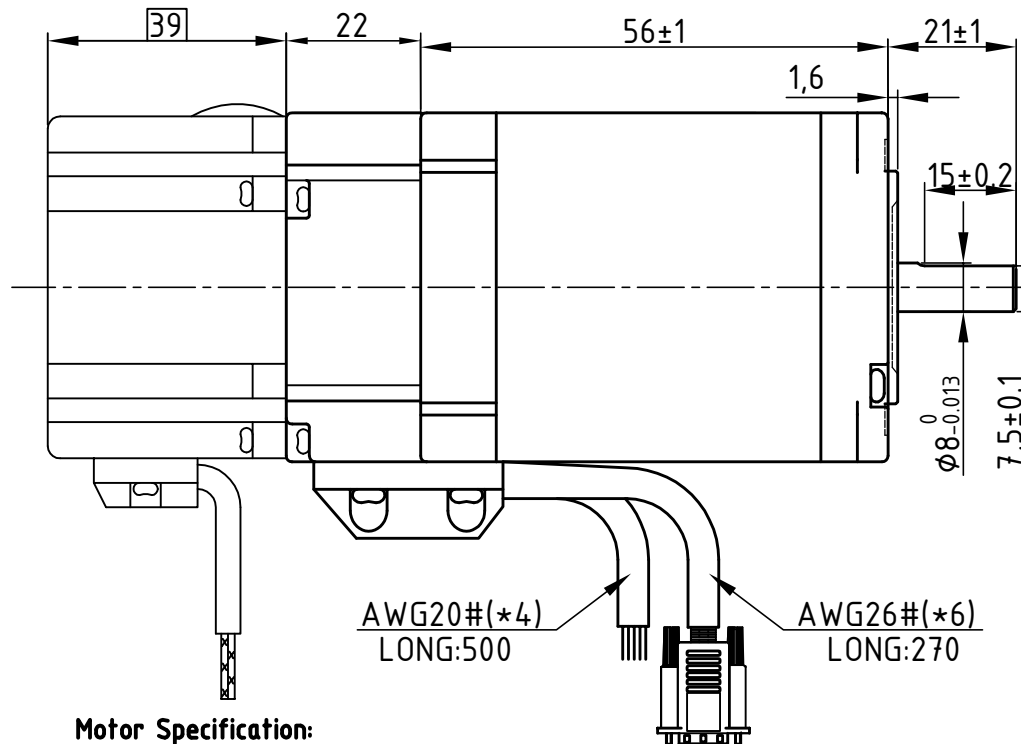
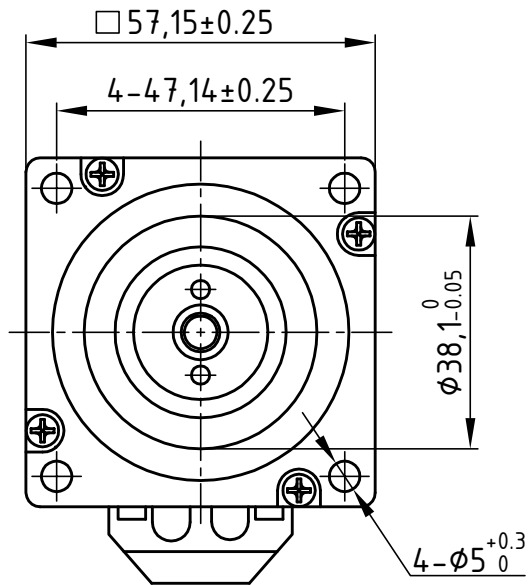
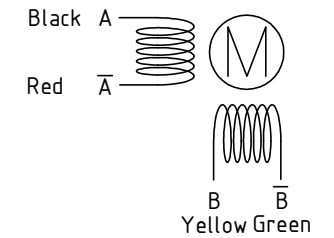


Dimension: (Unit: mm)

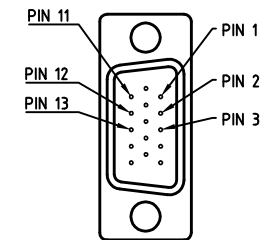


版本 Rev.	日期 Date	变更文件号 ECN NO.	变更内容 Revisions	设计 By
V1.0	18.10.19		带框图	王洪松

Motor Connctions:



Encoder Signals



PIN	1	2	3	11	12	13
Color	BLK	RED	WHT	YEL	GRN	BLU
Define	A+	VCC	GND	B+	B-	A-

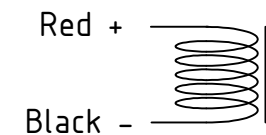
Common Rating

Step angle	1.8°
Position accuracy	1.8±0.09°
Dielectric strength	500VAC 1min
Insulation resistance	100M0hm(500VDC)
Insulation class	B
Temp rise(Max)	80K
Radial play	Max.0.02mm(Load 450g)
Axial play	Max.0.08mm(Load 900g)

Motor Specification:

Current/phase	4 A
Voltage	2.4 V
DC Resistance/phase ±10%	0.45 Ω
Inductance/phase ±20%	1.4 mH
Holding torque	1.2 N·M
Inertia	0.28 kg·cm ²
Weight	1.25 kg
Encoder Resolution	1000 cpr

Brake Connections



Brake Specification:

Voltage	24Vdc
Friction torque	2N·M
Power	4.5W

设计 Designed	王洪松	日期 Date	2018.11.27	材料 Material		深圳市雷赛智能控制股份有限公司 SHENZHEN LEADSHINE TECHNOLOGY CO., LTD.	
审核 Checked	黄捷建	2018.11.27	第一角画法 First Angle projection		名称 Title		Closed-loop Stepper Motor with Brake
批准 Approved	黄捷建	2018.11.27	重量 Weight	比例 Scale	阶段标记 Stage Mark	CS-M22313B	
料号 Part No.			共 1 页 第 1 页 Sheet 1 of 1			料号 DWG. NO.	LS-CME57-02-0111-08