

1

2

3

4

5

6

RevNo

Revision note

Date

Signature

Checked

A

B

C

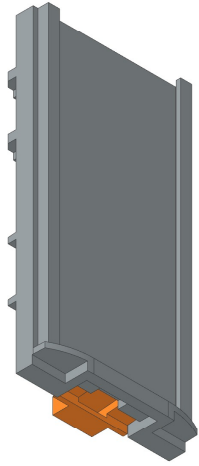
D

A

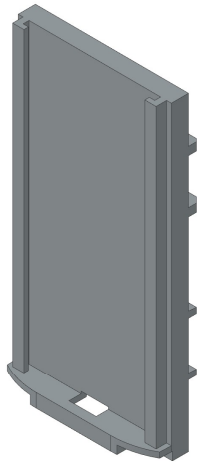
B

C

D

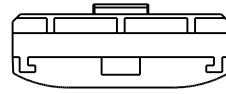
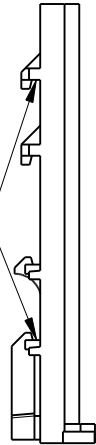


SCALE 1:1

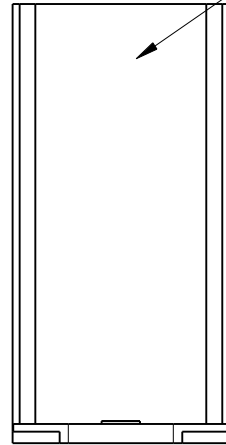


SCALE 1:1

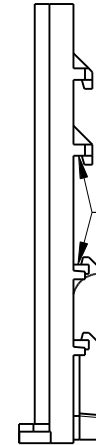
NS35 Din Rail slots



28,6

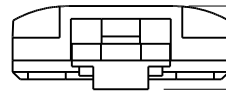
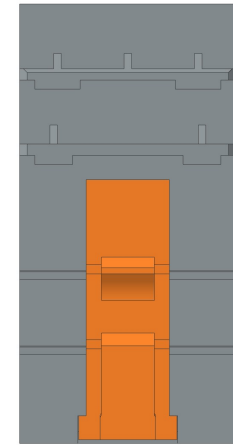


58,1



for accommodating 2.5 mm², 4 mm², and 10 mm² PT FIX blocks in vertical direction

NS15 Din Rail slots



11

| | | | | | | |
|-------------------------|----------|--|--------------------|-----------|-----------------------|--------------|
| Itemref | Quantity | Title/Name, designation, material, dimension etc | | | Article No./Reference | |
| Drawn by Kevin Damen | | Checked by | Approved by - date | File name | Date 11-7-2025 | Scale 1:1 |

7279

www.damencnc.com

7279 DIN rail adapter -
PTFIX2,5-4-NS35 - 3274054

Edition

Sheet

1 OF 1

Units: mm

1

2

3

4

5

6