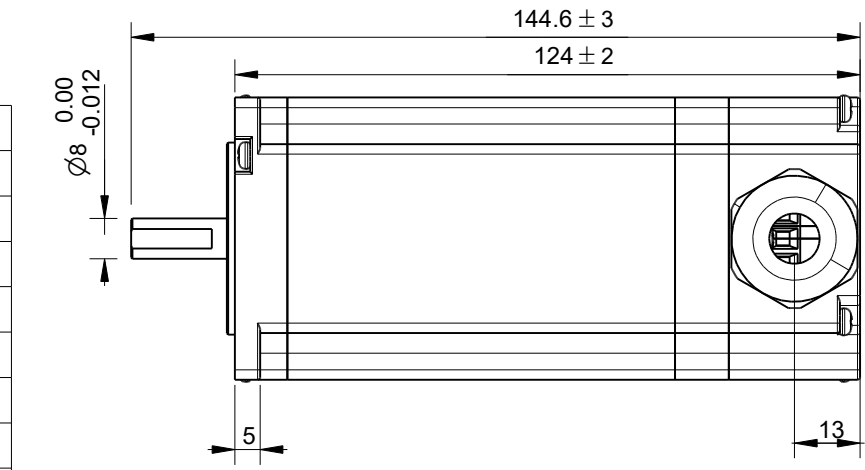
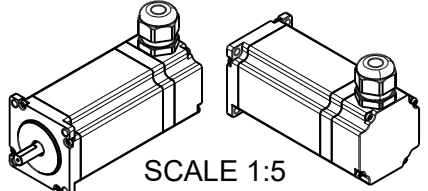
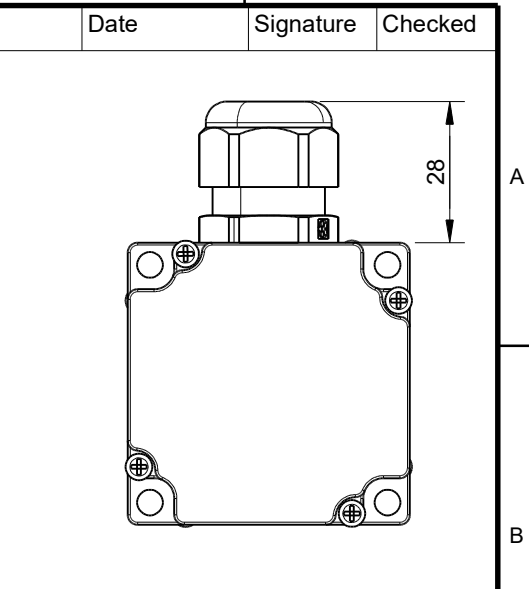
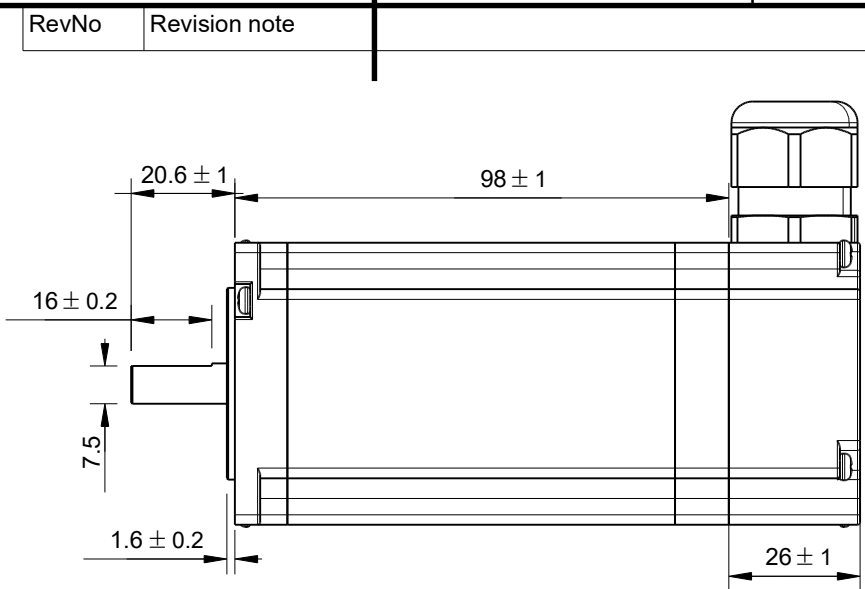
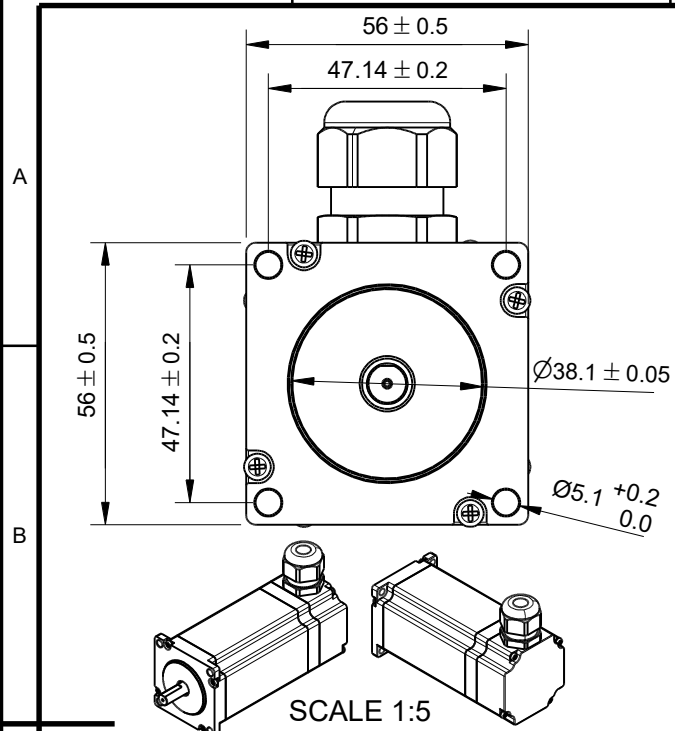


RevNo	Revision note			Date	Signature	Checked
-------	---------------	--	--	------	-----------	---------



Wiring Colour Table

A+	Red
A-	Blue
B+	Black
B-	Green

Exciting Sequence VS Direction of rotation

STEP	A+	B+	A-	B-	CCW
1	+	+	-	-	↑
2	-	+	+	-	
3	-	-	+	+	
4	+	-	-	+	

CW ↓

Phase	2 Phase	
Step angle	1.8 ± 5%	°/step
Rotor Inertia	0.68x10 ⁻⁴	kgm ²
Rated Voltage	3.0	VDC
Rated Current	4.2	Amps/Phase
Resistance	0.7 ± 10%	Ω/Phase
Inductance	3.0 ± 20%	mH/Phase
Insulation resistance	100	MΩ Min
Holding Torque	2.5	Nm Min
Detent Torque	0.0375	Nm Max
Insulation Class	B	
Lead Style	AWG18 UL1007	
Mass	1.5	Kg
Units	mm	
Tolerances	± 0.1mm unless otherwise specified	

Itemref	Quantity	Title/Name, designation, material, dimension etc			Article No./Reference	
Drawn by Cas Jansen	Checked by Kevin Damen	Approved by - date 15-1-2021	File name	Date 14-1-2021	Scale 1:1.5	
<h1>751</h1>			www.damencnc.com			
751 Stepper Motor DCNC-NEMA23-2.5Nm (IP54)			Edition	Sheet 1 OF 1		