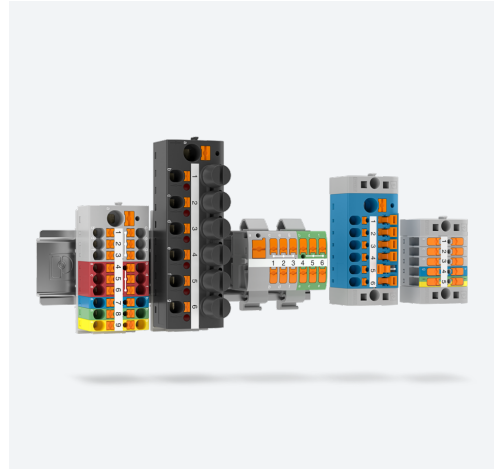


# FIX BLOCK SYSTEM

## Notes on mounting FIX blocks



Application note  
111886\_en\_00

© Phoenix Contact 2025-03-05

### 1 Description

The FIX block system includes various versions that can be connected via a tongue and groove connection.

- Distribution blocks
- Single blocks
- Function distribution blocks
- Device terminal blocks

**FIX distribution blocks** are available in nominal cross-sections from 1.5 mm<sup>2</sup> to 10 mm<sup>2</sup>. They have 4, 6, 12, or 18 distribution connections that are bridged with each other. In addition, the distribution blocks are also available with an additional feed-in contact.

**FIX single blocks** are single-position terminal blocks with two connections. They are available with nominal cross-sections of 1.5 mm<sup>2</sup>, 2 mm<sup>2</sup>, and 4 mm<sup>2</sup>.

**FIX function distribution blocks** have integrated function elements. They enable the integration of fuses, disconnect knives, or component connectors for each distribution connection. Component connectors enable the installation of components that can be individually selected. The function distribution blocks are available with a nominal cross-section of 2.5 mm<sup>2</sup>. They have a 6 mm feed-in contact and six distribution connections.

**FIX device terminal blocks** do not have integrated bridging. They consist of one or more feed-through connections. They are available with a nominal cross-section of 2.5 mm<sup>2</sup> and in versions with two to five potentials.

You can use various adapters for **mounting** FIX blocks. The following mounting types are possible:

- DIN rail mounting
- Direct mounting
- Adhesive mounting

**i** FIX blocks can be combined in many different ways. For safe mounting, FIX blocks must be secured at certain distances, e.g., using DIN rail adapters, flanges, or securing pins. We recommend that you observe the mounting rules listed in this document. For your application, make sure that the FIX blocks are securely attached.

For **wiring**, the blocks are equipped with a Push-in connection.

### Observe these notes

**i** Make sure you always use the latest documentation. It can be downloaded at [phoenixcontact.com/product/1045923](https://phoenixcontact.com/product/1045923).

**i** This document is valid for the products listed in Section “Ordering data” on page 3.

## Table of contents

1	Description .....	1
2	Ordering data .....	3
2.1	Order key for Fix blocks .....	3
2.2	Accessories for mounting .....	4
3	Technical data .....	5
3.1	Conductor cross-section .....	5
3.2	Electrical data .....	8
4	Mounting types .....	9
5	DIN rail mounting .....	10
5.1	Suitable DIN rail adapters .....	10
5.2	Mounting rules for FIX single blocks .....	10
5.3	Mounting rules for FIX blocks .....	11
6	Vertical mounting of FIX blocks on a DIN rail .....	12
6.1	Suitable DIN rail adapters .....	12
6.2	Mounting rules for FIX single blocks .....	12
6.3	Mounting rules for FIX blocks .....	12
7	Direct mounting with flange .....	13
7.1	Ordering data .....	13
7.2	Dimensional drawing .....	13
7.3	Mounting rules for FIX single blocks .....	14
7.4	Mounting rules for FIX blocks .....	14
8	Direct mounting with securing pin .....	15
8.1	Ordering data .....	15
8.2	Dimensional drawing .....	15
8.3	Mounting rules for FIX single blocks .....	16
8.4	Mounting rules for FIX blocks .....	16
9	Adhesive mounting .....	17
10	FIX online configurator .....	18

## 2 Ordering data

### 2.1 Order key for Fix blocks

PTFIX	4/	2X	1.5	-G	GY
<p><b>PTFIX</b> = distribution block with front Push-in connection (with bridging)</p> <p><b>PTVFIX</b> = device terminal block with lateral Push-in connection (without bridging)</p>	<p>Optional: nominal cross-section of the feed-in connection</p> <p><b>4/</b> = 4 mm<sup>2</sup></p> <p><b>6/</b> = 6 mm<sup>2</sup></p> <p><b>10/</b> = 10 mm<sup>2</sup></p>	<p>Terminal points</p> <p><b>2</b></p> <p><b>4</b></p> <p><b>6</b></p> <p><b>12</b></p> <p><b>18</b></p>	<p>Nominal cross-section of distribution connection</p> <p><b>1.5 mm<sup>2</sup></b></p> <p><b>2.5 mm<sup>2</sup></b></p> <p><b>4 mm<sup>2</sup></b></p> <p><b>10 mm<sup>2</sup></b></p>	<p>Mounting type</p> <p><b>-G</b> = adhesive</p> <p><b>-NS15A</b> = NS 15 DIN rail</p> <p><b>-NS35A</b> = NS 35 DIN rail</p> <p><b>-NS35</b> = NS 15 and NS 35 DIN rails (vertical)</p> <p>Function</p> <p><b>-TG</b> = disconnect base block</p> <p><b>-MT</b> = knife-disconnect block</p> <p><b>-MTL</b> = lever-type knife-disconnect block</p> <p><b>-SI (5X20)</b> = fuse block</p>	<p>Color</p> <p><b>BK</b> = black</p> <p><b>BN</b> = brown</p> <p><b>BU</b> = blue</p> <p><b>BU/WH</b> = blue-white</p> <p><b>FE</b> = yellow-black</p> <p><b>GN</b> = green</p> <p><b>GN/YE</b> = green-yellow</p> <p><b>GY</b> = gray</p> <p><b>OG</b> = orange</p> <p><b>PK</b> = pink</p> <p><b>RD</b> = red</p> <p><b>VT</b> = violet</p> <p><b>WH</b> = white</p> <p><b>YE</b> = yellow</p>

## 2.2 Accessories for mounting

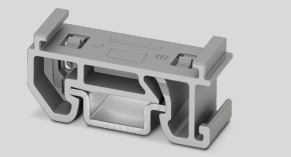
### DIN rail mounting

#### Description

#### Type

#### Item No.

#### DIN rail adapter for NS 15



For 1.5 mm<sup>2</sup> FIX blocks

PTFIX 1,5-NS15A

1049500

For 2.5 mm<sup>2</sup> and 4 mm<sup>2</sup> FIX blocks

PTFIX-NS15A

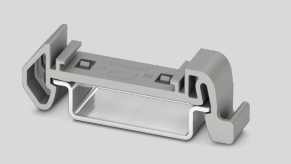
3274058

For 2.5 mm<sup>2</sup> and 4 mm<sup>2</sup> FIX blocks, with end bracket function

PTFIX-NS15A-FIX

3274059

#### DIN rail adapter for NS 35



For two 1.5 mm<sup>2</sup> FIX blocks

PTFIX 1,5-NS35AD

1049498

For 2.5 mm<sup>2</sup> and 4 mm<sup>2</sup> FIX blocks

PTFIX-NS35A

3274056

For 2.5 mm<sup>2</sup> and 4 mm<sup>2</sup> FIX blocks, with end bracket function

PTFIX-NS35A-FIX

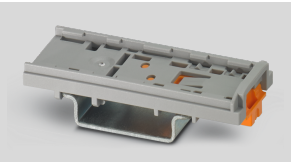
3274057

For 10 mm<sup>2</sup> FIX blocks

PTFIX 10/S-NS35A

1082915

#### DIN rail adapter, for vertical mounting of FIX blocks, for NS 15 and NS 35



For 1.5 mm<sup>2</sup> FIX blocks

PTFIX 1,5-NS35

1049497

For 2.5 mm<sup>2</sup>, 4 mm<sup>2</sup>, and 10 mm<sup>2</sup> FIX blocks

PTFIX-NS35

3274054

### Direct mounting

#### Description

#### Type

#### Item No.

#### Flange for screw mounting, for direct mounting



For 1.5 mm<sup>2</sup> FIX blocks

PTFIX 1,5-F

1049503

For 2.5 mm<sup>2</sup> and 4 mm<sup>2</sup> FIX blocks

PTFIX-F

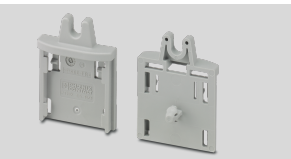
3274060

For 10 mm<sup>2</sup> FIX blocks

PTFIX 10/S-F

1082917

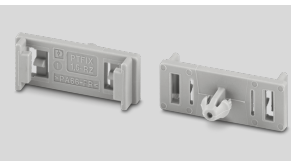
#### Securing pin adapter, for direct mounting



For 1.5 mm<sup>2</sup> FIX blocks, with bracket for screw mounting

PTFIX 1,5-RZF

1050613



For 1.5 mm<sup>2</sup> FIX blocks

PTFIX 1,5-RZ

1632415

For 2.5 mm<sup>2</sup>, 4 mm<sup>2</sup>, and 10 mm<sup>2</sup> FIX blocks

PTFIX 2,5-RZ

1632417

### 3 Technical data

#### 3.1 Conductor cross-section

##### Distribution block, 1.5 mm<sup>2</sup>

Rigid	0.14 mm <sup>2</sup> ... 2.5 mm <sup>2</sup> /26 AWG ... 14 AWG
Flexible	0.14 mm <sup>2</sup> ... 1.5 mm <sup>2</sup> /26 AWG ... 16 AWG
Flexible with ferrule with plastic sleeve	0.14 mm <sup>2</sup> ... 1.5 mm <sup>2</sup>
Flexible with ferrule without plastic sleeve	0.14 mm <sup>2</sup> ... 1.5 mm <sup>2</sup>
Directly pluggable: rigid/with ferrule	0.34 mm <sup>2</sup> ... 2.5 mm <sup>2</sup> /0.5 mm <sup>2</sup> ... 1.5 mm <sup>2</sup>
Stripping length	8 mm ... 10 mm

##### Distribution block, 1.5 mm<sup>2</sup> with 4 mm<sup>2</sup> feed-in

##### Feed-in contacts

Rigid	0.2 mm <sup>2</sup> ... 6 mm <sup>2</sup> /24 AWG ... 10 AWG
Flexible	0.2 mm <sup>2</sup> ... 4 mm <sup>2</sup> /24 AWG ... 12 AWG
Flexible with ferrule with plastic sleeve	0.2 mm <sup>2</sup> ... 4 mm <sup>2</sup>
Flexible with ferrule without plastic sleeve	0.2 mm <sup>2</sup> ... 4 mm <sup>2</sup>
Directly pluggable: rigid/with ferrule	0.5 mm <sup>2</sup> ... 6 mm <sup>2</sup> /0.5 mm <sup>2</sup> ... 4 mm <sup>2</sup>
Stripping length	10 mm ... 12 mm

##### Pick-off contacts

Rigid	0.14 mm <sup>2</sup> ... 2.5 mm <sup>2</sup> /26 AWG ... 14 AWG
Flexible	0.14 mm <sup>2</sup> ... 1.5 mm <sup>2</sup> /26 AWG ... 16 AWG
Flexible with ferrule with plastic sleeve	0.14 mm <sup>2</sup> ... 1.5 mm <sup>2</sup>
Flexible with ferrule without plastic sleeve	0.14 mm <sup>2</sup> ... 1.5 mm <sup>2</sup>
Directly pluggable: rigid/with ferrule	0.34 mm <sup>2</sup> ... 2.5 mm <sup>2</sup> /0.5 mm <sup>2</sup> ... 1.5 mm <sup>2</sup>
Stripping length	8 mm ... 10 mm

**Distribution block, 2.5 mm<sup>2</sup>**

Rigid	0.14 mm <sup>2</sup> ... 4 mm <sup>2</sup> /26 AWG ... 12 AWG
Flexible	0.14 mm <sup>2</sup> ... 4 mm <sup>2</sup> /26 AWG ... 12 AWG
Flexible with ferrule with plastic sleeve	0.14 mm <sup>2</sup> ... 2.5 mm <sup>2</sup>
Flexible with ferrule without plastic sleeve	0.14 mm <sup>2</sup> ... 2.5 mm <sup>2</sup>
Directly pluggable: rigid/with ferrule	0.34 mm <sup>2</sup> ... 4 mm <sup>2</sup> /0.5 mm <sup>2</sup> ... 2.5 mm <sup>2</sup>
Stripping length	8 mm ... 10 mm

**Distribution block, 2.5 mm<sup>2</sup> with 6 mm<sup>2</sup> feed-in**

**Feed-in contacts**

Rigid	0.5 mm <sup>2</sup> ... 10 mm <sup>2</sup> /20 AWG ... 8 AWG
Flexible	0.5 mm <sup>2</sup> ... 10 mm <sup>2</sup> /20 AWG ... 8 AWG
Flexible with ferrule with plastic sleeve	0.5 mm <sup>2</sup> ... 6 mm <sup>2</sup>
Flexible with ferrule without plastic sleeve	0.5 mm <sup>2</sup> ... 6 mm <sup>2</sup>
Directly pluggable: rigid/with ferrule	1 mm <sup>2</sup> ... 10 mm <sup>2</sup> /1 mm <sup>2</sup> ... 6 mm <sup>2</sup>
Stripping length	10 mm ... 12 mm

**Pick-off contacts**

Rigid	0.14 mm <sup>2</sup> ... 4 mm <sup>2</sup> /26 AWG ... 12 AWG
Flexible	0.14 mm <sup>2</sup> ... 4 mm <sup>2</sup> /26 AWG ... 12 AWG
Flexible with ferrule with plastic sleeve	0.14 mm <sup>2</sup> ... 2.5 mm <sup>2</sup>
Flexible with ferrule without plastic sleeve	0.14 mm <sup>2</sup> ... 2.5 mm <sup>2</sup>
Directly pluggable: rigid/with ferrule	0.34 mm <sup>2</sup> ... 4 mm <sup>2</sup> /0.5 mm <sup>2</sup> ... 2.5 mm <sup>2</sup>
Stripping length	8 mm ... 10 mm

**Distribution block, 4 mm<sup>2</sup>**

Rigid	0.2 mm <sup>2</sup> ... 6 mm <sup>2</sup> /24 AWG ... 10 AWG
Flexible	0.2 mm <sup>2</sup> ... 4 mm <sup>2</sup> /24 AWG ... 12 AWG
Flexible with ferrule with plastic sleeve	0.2 mm <sup>2</sup> ... 4 mm <sup>2</sup>
Flexible with ferrule without plastic sleeve	0.2 mm <sup>2</sup> ... 4 mm <sup>2</sup>
Directly pluggable: rigid/with ferrule	0.5 mm <sup>2</sup> ... 6 mm <sup>2</sup> /0.5 mm <sup>2</sup> ... 6 mm <sup>2</sup>
Stripping length	8 mm ... 10 mm

**Distribution block, 4 mm<sup>2</sup> with 10 mm<sup>2</sup> feed-in**

**Feed-in contacts**

Rigid	0.5 mm <sup>2</sup> ... 10 mm <sup>2</sup> /20 AWG ... 8 AWG
Flexible	0.5 mm <sup>2</sup> ... 10 mm <sup>2</sup> /20 AWG ... 8 AWG
Flexible with ferrule with plastic sleeve	0.5 mm <sup>2</sup> ... 10 mm <sup>2</sup>
Flexible with ferrule without plastic sleeve	0.5 mm <sup>2</sup> ... 10 mm <sup>2</sup>
Directly pluggable: rigid/with ferrule	0.5 mm <sup>2</sup> ... 6 mm <sup>2</sup> /0.5 mm <sup>2</sup> ... 4 mm <sup>2</sup>
Stripping length	10 mm ... 12 mm

**Pick-off contacts**

Rigid	0.2 mm <sup>2</sup> ... 6 mm <sup>2</sup> /24 AWG ... 10 AWG
Flexible	0.2 mm <sup>2</sup> ... 4 mm <sup>2</sup> /24 AWG ... 12 AWG
Flexible with ferrule with plastic sleeve	0.2 mm <sup>2</sup> ... 4 mm <sup>2</sup>
Flexible with ferrule without plastic sleeve	0.2 mm <sup>2</sup> ... 4 mm <sup>2</sup>
Directly pluggable: rigid/with ferrule	0.5 mm <sup>2</sup> ... 6 mm <sup>2</sup> /0.5 mm <sup>2</sup> ... 6 mm <sup>2</sup>
Stripping length	8 mm ... 10 mm

**Distribution block, 10 mm<sup>2</sup>**

Rigid	0.5 mm <sup>2</sup> ... 16 mm <sup>2</sup> /20 AWG ... 6 AWG
Flexible	0.5 mm <sup>2</sup> ... 16 mm <sup>2</sup> /20 AWG ... 6 AWG
Flexible with ferrule with plastic sleeve	1 mm <sup>2</sup> ... 6 mm <sup>2</sup>
Flexible with ferrule without plastic sleeve	1 mm <sup>2</sup> ... 10 mm <sup>2</sup>
Directly pluggable: rigid/flexible	1 mm <sup>2</sup> ... 16 mm <sup>2</sup> /1 mm <sup>2</sup> ... 10 mm <sup>2</sup>
Directly pluggable: with ferrule with/without plastic sleeve	1 mm <sup>2</sup> ... 6 mm <sup>2</sup> /1 mm <sup>2</sup> ... 10 mm <sup>2</sup>
Stripping length	12 mm ... 14 mm

**Push-in connection**

PTFIX and PTVFIX blocks have a Push-in connection.

Starting from the conductor cross-sections listed below, you can insert rigid conductors (or flexible conductors with a ferrule) directly into the blocks without tools:

- PTFIX 1,5 and PTFIX 2,5... from 0.34 mm<sup>2</sup>
- PTFIX 4... from 0.5 mm<sup>2</sup>
- PTFIX 6X10... from 1 mm<sup>2</sup>

To connect flexible conductors without ferrules or smaller conductors, and to release them, use a screwdriver to push down the orange actuating push button.

### 3.2 Electrical data

#### Electrical data in accordance with IEC 60947-7-1

FIX blocks – snapped onto DIN rail adapters/mounted with flanges or securing pins					
Voltage	500 V (1.5 mm <sup>2</sup> ) ... 800 V (10 mm <sup>2</sup> )				
	Distribution connection	Nominal current	Feed-in	Nominal current	Maximum
Current	1.5 mm <sup>2</sup>	17.5 A	–	–	22 A (2.5 mm <sup>2</sup> )
	1.5 mm <sup>2</sup>	17.5 A	4 mm <sup>2</sup>	32 A	41 A (6 mm <sup>2</sup> )
	2.5 mm <sup>2</sup>	22 A	–	–	32 A (4 mm <sup>2</sup> )
	2.5 mm <sup>2</sup>	22 A	6 mm <sup>2</sup>	41 A	57 A (10 mm <sup>2</sup> )
	4 mm <sup>2</sup>	32 A	–	–	41 A (6 mm <sup>2</sup> )
	4 mm <sup>2</sup>	32 A	10 mm <sup>2</sup>	57 A	57 A (10 mm <sup>2</sup> )
	10 mm <sup>2</sup>	57 A	–	–	76 A (16 mm <sup>2</sup> )

#### Electrical data in accordance with IEC 60998-2-2

FIX blocks without mounting adapters and adhesive versions					
Voltage	450 V				
	Distribution connection	Nominal current	Feed-in	Nominal current	Maximum
Current	1.5 mm <sup>2</sup>	17.5 A	–	–	22 A (2.5 mm <sup>2</sup> )
	1.5 mm <sup>2</sup>	17.5 A	4 mm <sup>2</sup>	32 A	41 A (6 mm <sup>2</sup> )
	2.5 mm <sup>2</sup>	22 A	–	–	32 A (4 mm <sup>2</sup> )
	2.5 mm <sup>2</sup>	22 A	6 mm <sup>2</sup>	41 A	57 A (10 mm <sup>2</sup> )
	4 mm <sup>2</sup>	32 A	–	–	41 A (6 mm <sup>2</sup> )
	4 mm <sup>2</sup>	32 A	10 mm <sup>2</sup>	57 A	57 A (10 mm <sup>2</sup> )
	10 mm <sup>2</sup>	57 A	–	–	76 A (16 mm <sup>2</sup> )

**i** The maximum current value refers to the maximum conductor cross-section. Observe the maximum total current of the corresponding FIX block.

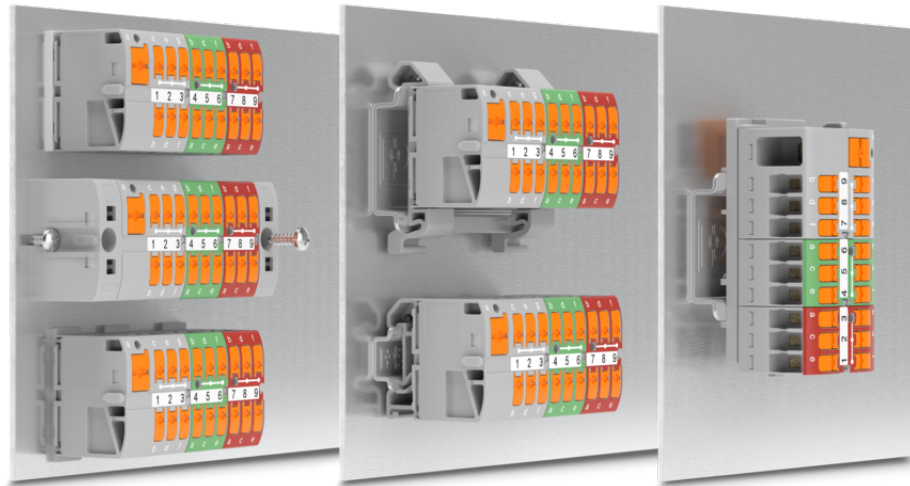
## 4 Mounting types

Figure 1 Overview of the mounting types

Adhesive mounting

Direct mounting with flange

Direct mounting with securing pin



DIN rail mounting on NS 35  
or NS 15

Vertical mounting on NS 35 or  
NS 15 DIN rails

### Adhesive mounting (in accordance with IEC 60998-2-2)

FIX block versions for adhesive mounting have an adhesive pad on the bottom of the block. To mount these blocks, remove the protective foil covering the adhesive. Then, you can attach the block to various surfaces. For additional information, refer to [Section 9 on page 17](#).

### Direct mounting with flange (in accordance with IEC 60947-7-1)

For mounting, first snap the FIX blocks onto the flange adapters. Then, secure the flanges to the mounting panel using screws.

The flanges can be mounted on both sides. For increased support, the flanges can also be used within a FIX row. For additional information, refer to [Section 7 on page 13](#).

### Direct mounting with securing pin (in accordance with IEC 60947-7-1)

For direct mounting with securing pin, the FIX block is attached to a securing pin adapter. The securing pins then engage with the pre-drilled holes in the mounting panel. For additional information, refer to [Section 8 on page 15](#).

### DIN rail mounting (in accordance with IEC 60947-7-1)

DIN rail adapters are available for NS 15 and NS 35 DIN rails. For mounting, push the corresponding adapter feet under the FIX block. The FIX block can then be snapped onto the DIN rail. For additional information, refer to [Section 5 on page 10](#).

### Vertical mounting of FIX blocks on a DIN rail (in accordance with IEC 60947-7-1)

The DIN rail adapter for the vertical mounting of FIX blocks can be mounted on NS 35 and NS 15 DIN rails. For mounting, push the FIX blocks onto the adapter. The adapter is then snapped onto the DIN rail. When mounting, make sure that the side with the base latch is facing downwards. This prevents the FIX blocks from sliding down. For additional information, refer to [Section 6 on page 12](#).

### Overhung mounting (without mounting adapter)

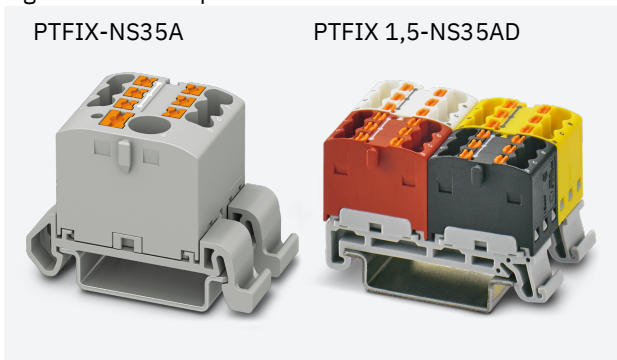
The IEC 60998-2-2 standard applies to FIX blocks with this mounting type.

## 5 DIN rail mounting

### 5.1 Suitable DIN rail adapters

DIN rail adapter for NS 15		
1.5 mm <sup>2</sup>	PTFIX 1,5-NS15A	1049500
2.5 mm <sup>2</sup> and 4 mm <sup>2</sup>	PTFIX-NS15A	3274058
2.5 mm <sup>2</sup> and 4 mm <sup>2</sup> , with end bracket func- tion	PTFIX-NS15A-FIX	3274059
DIN rail adapter for NS 35		
2.5 mm <sup>2</sup> and 4 mm <sup>2</sup>	PTFIX-NS35A	3274056
2.5 mm <sup>2</sup> and 4 mm <sup>2</sup> , with end bracket func- tion	PTFIX-NS35A-FIX	3274057
For two 1.5 mm <sup>2</sup> FIX blocks	PTFIX 1,5-NS35AD	1049498
10 mm <sup>2</sup>	PTFIX 10/S-NS35A	1082915

Figure 2 Examples

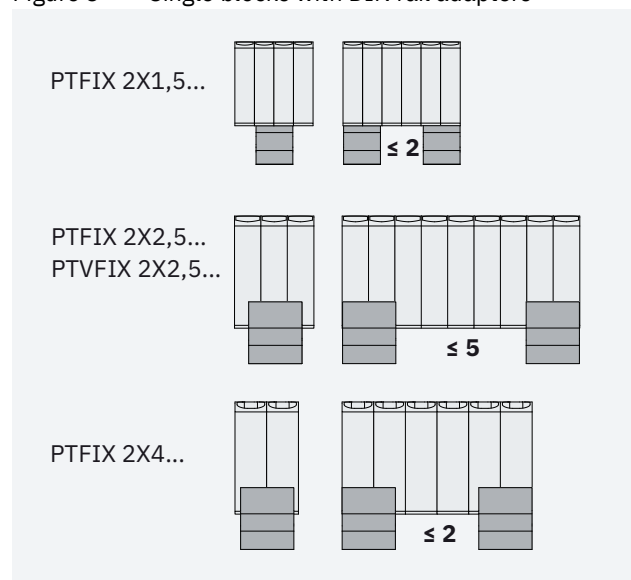


### 5.2 Mounting rules for FIX single blocks

Place the DIN rail adapters in such a way that the unsupported single blocks do not exceed number specified below.

Item	Number
PTFIX 2X1,5...	2
PTFIX 2X2,5...	5
PTVFIX 2X2,5...	5
PTFIX 2X4...	2

Figure 3 Single blocks with DIN rail adapters

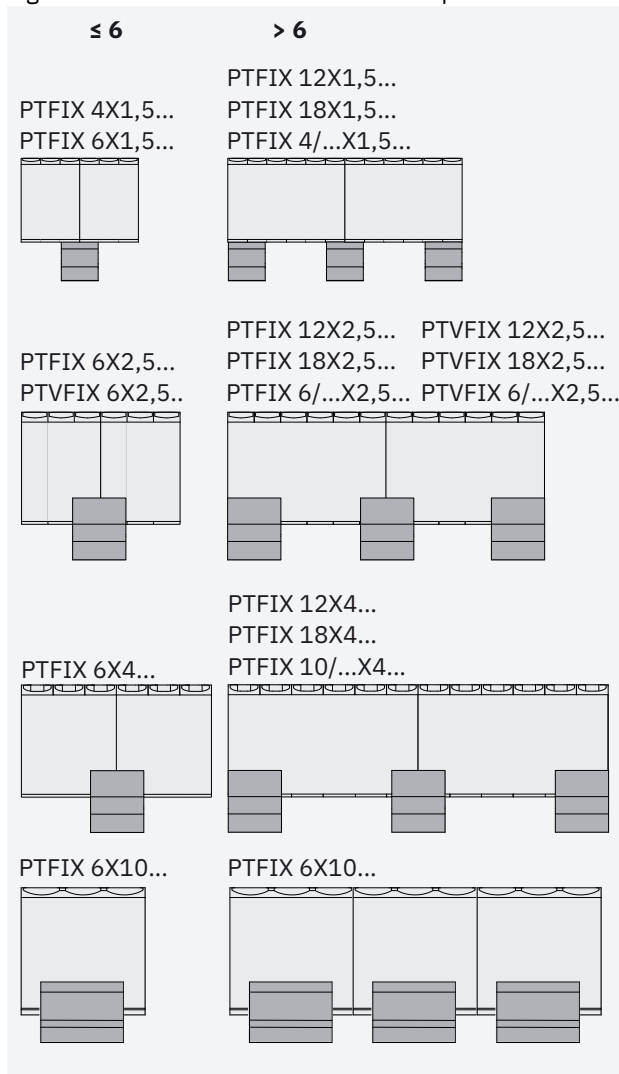


### 5.3 Mounting rules for FIX blocks

For FIX blocks with up to 6 connections, it is sufficient to place a DIN rail adapter under the center of each FIX block.

In all other cases, always place a DIN rail adapter under the position at which the FIX blocks are mounted side by side.

Figure 4 FIX blocks with DIN rail adapters

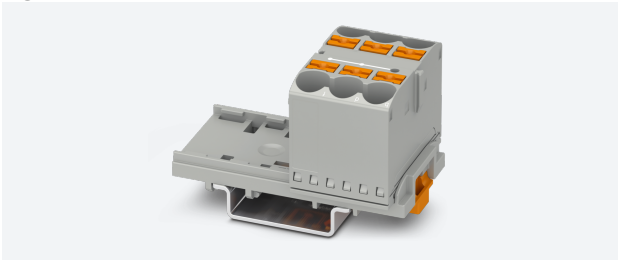


## 6 Vertical mounting of FIX blocks on a DIN rail

### 6.1 Suitable DIN rail adapters

DIN rail adapter for NS 15 and NS 35, for vertical mounting of FIX blocks		
1.5 mm <sup>2</sup>	PTFIX 1,5-NS35	1049497
2.5 mm <sup>2</sup> , 4 mm <sup>2</sup> , and 10 mm <sup>2</sup>	PTFIX-NS35	3274054

Figure 5 Example



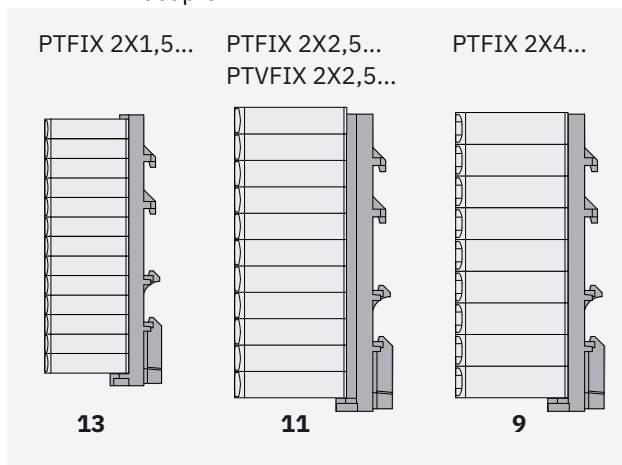
### 6.2 Mounting rules for FIX single blocks

When mounting, make sure that the side with the base latch is facing downwards. This prevents the blocks from sliding down.

Do not exceed the number specified below when placing single blocks on the PTFIX...NS35 DIN rail adapter.

Item	Number
PTFIX 2X1,5...	13
PTFIX 2X2,5...	11
PTVFIX 2X2,5...	11
PTFIX 2X4...	9

Figure 6 Single blocks with a PTFIX...NS35 DIN rail adapter

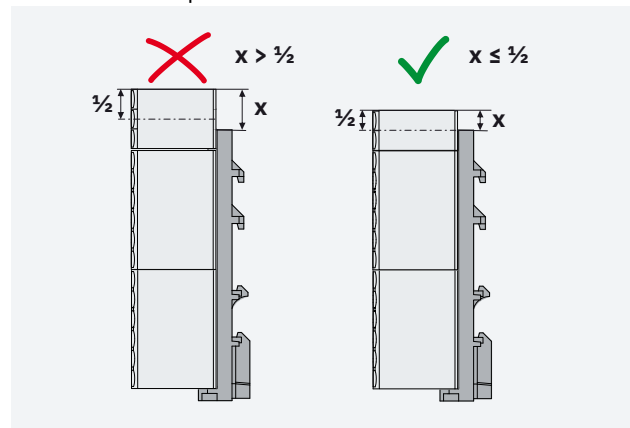


### 6.3 Mounting rules for FIX blocks

When mounting, make sure that the side with the base latch is facing downwards. This prevents the blocks from sliding down.

A FIX block that is mounted side-by-side may only exceed the edge of a PTFIX...NS35 DIN rail adapter by half its size.

Figure 7 FIX blocks with a PTFIX...NS35 DIN rail adapter



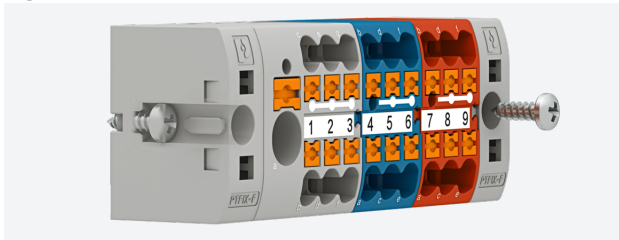
## 7 Direct mounting with flange

### 7.1 Ordering data

#### Flange, for direct mounting

1.5 mm <sup>2</sup>	PTFIX 1,5-F	1049503
2.5 mm <sup>2</sup> and 4 mm <sup>2</sup>	PTFIX-F	3274060
10 mm <sup>2</sup>	PTFIX 10/S-F	1082917

Figure 8 Example

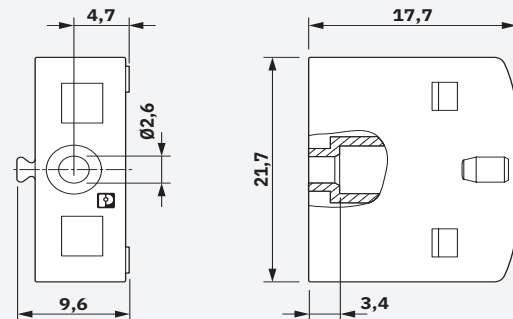


### 7.2 Dimensional drawing

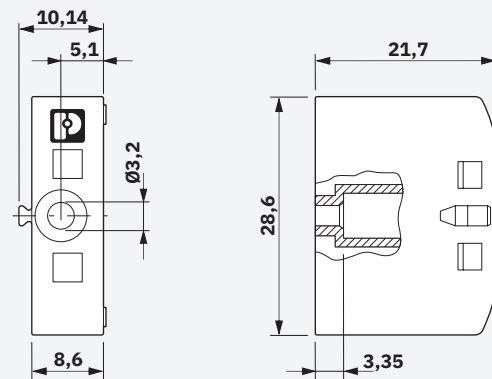
The flange is attached to the mounting panel using a screw.

Figure 9 Drill hole and screw sizes

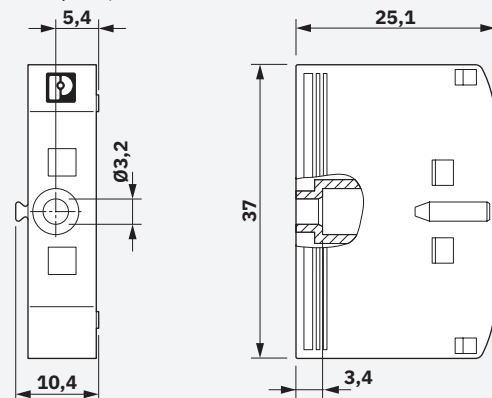
PTFIX 1,5-F, 1049503



PTFIX-F, 3274060



PTFIX 10/S-F, 1082917

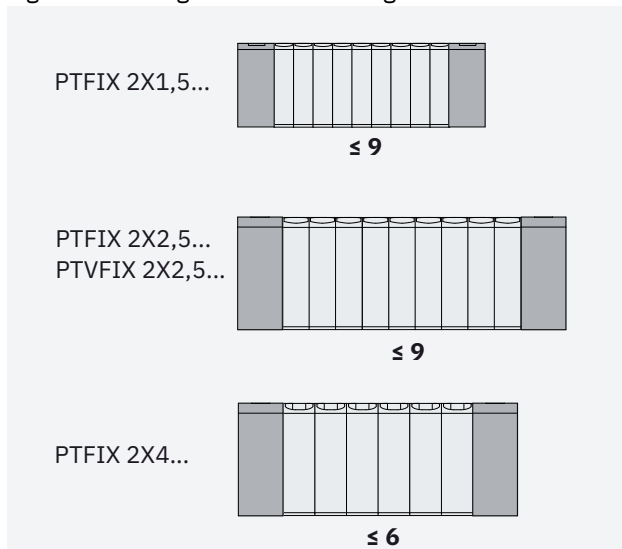


### 7.3 Mounting rules for FIX single blocks

As a minimum requirement, you must place a flange after the number of single blocks specified below.

Item	Number
PTFIX 2X1,5...	9
PTFIX 2X2,5...	9
PTVFIX 2X2,5...	9
PTFIX 2X4...	6

Figure 10 Single blocks with flange

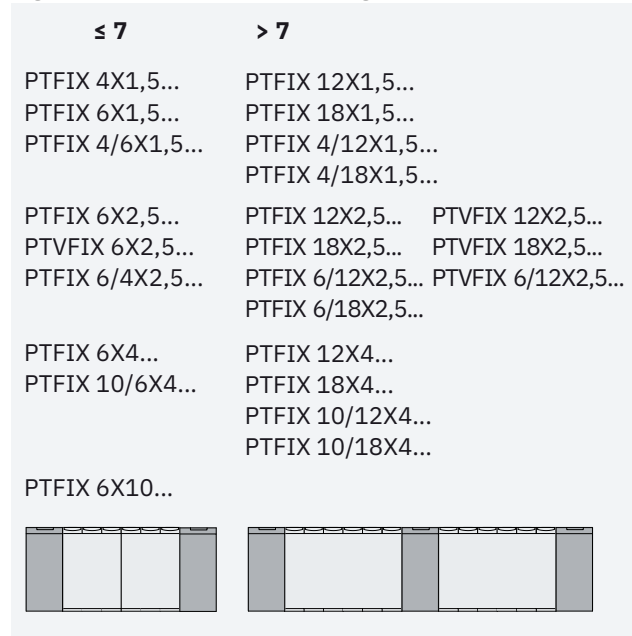


### 7.4 Mounting rules for FIX blocks

For FIX blocks with up to 7 connections, it is sufficient to place a flange after every second FIX block.

In all other cases, you must always place a flange between the FIX blocks.

Figure 11 FIX blocks with flange

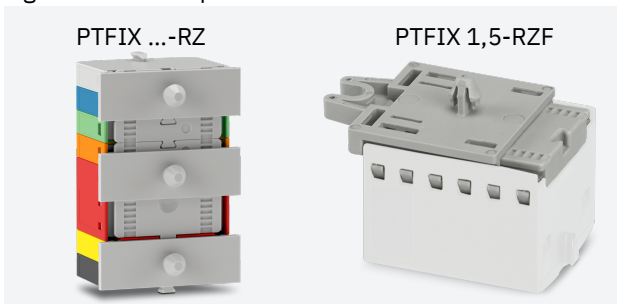


## 8 Direct mounting with securing pin

### 8.1 Ordering data

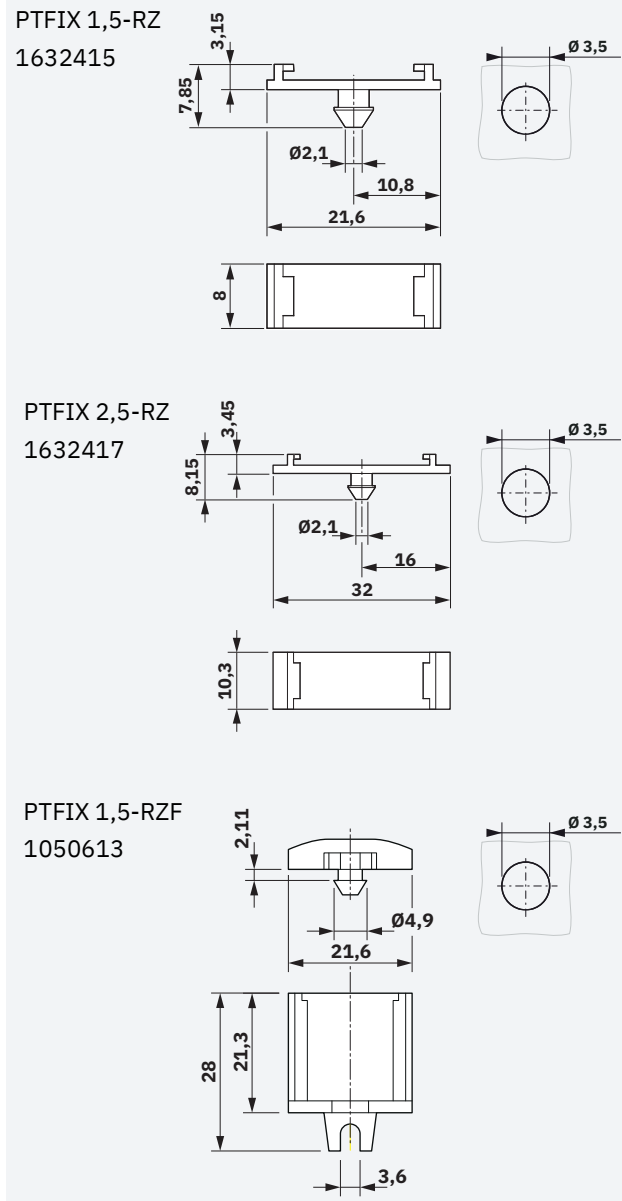
Securing pin adapter, for direct mounting		
1.5 mm <sup>2</sup>	PTFIX 1,5-RZ	1632415
2.5 mm <sup>2</sup> , 4 mm <sup>2</sup> , and 10 mm <sup>2</sup>	PTFIX 2,5-RZ	1632417
1.5 mm <sup>2</sup> , for screw mounting	PTFIX 1,5-RZF	1050613

Figure 12 Example



### 8.2 Dimensional drawing

Figure 13 Securing pin adapter and drill hole size



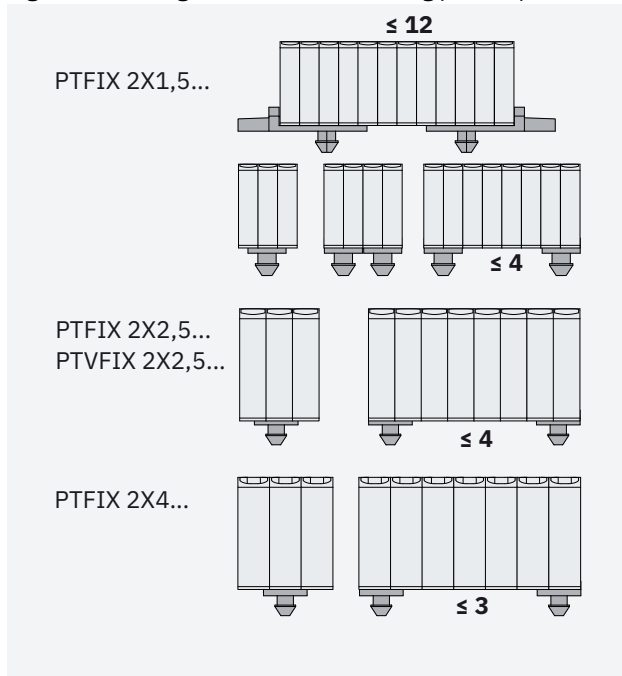
### 8.3 Mounting rules for FIX single blocks

As a minimum requirement, you must place a securing pin adapter after the number of single blocks specified below.

**i** Protection against rotation is not guaranteed with just one securing pin adapter.

Item	Number	
	PTFIX 1,5-RZ	PTFIX 1,5-RZF
PTFIX 2X1,5...	4	12
	PTFIX 2,5-RZ	
PTFIX 2X2,5...	4	
PTVFIX 2X2,5...	4	
PTFIX 2X4...	3	

Figure 14 Single blocks with securing pin adapter



### 8.4 Mounting rules for FIX blocks

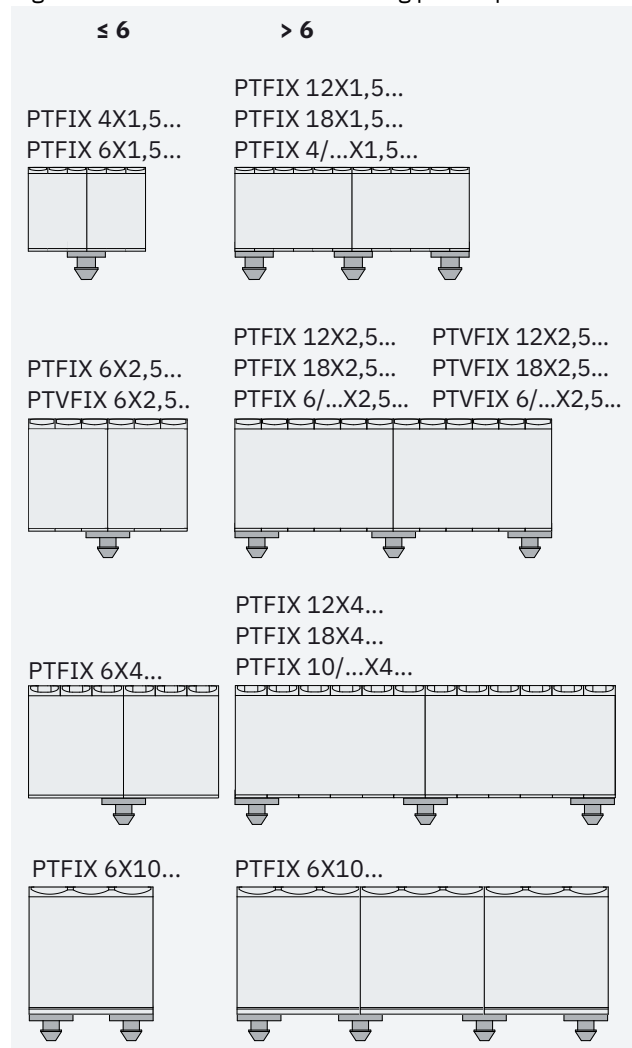
Always place a securing pin adapter under the position at which the FIX blocks are mounted side by side.

For FIX blocks of up to 4 mm<sup>2</sup> and with up to 6 connections, it is sufficient to place a securing pin adapter in the center of each block.

**i** Protection against rotation is not guaranteed with just one securing pin adapter.

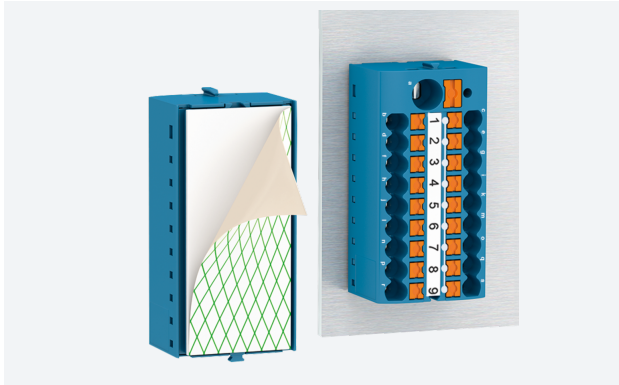
For FIX blocks with 7 or more connections or 10 mm<sup>2</sup>, place a securing pin adapter at each end.

Figure 15 FIX blocks with securing pin adapter



## 9 Adhesive mounting

Figure 16 Adhesive mounting



Using an adhesive pad, you can bond certain FIX blocks to the following surfaces:

- Most powder-coated surfaces
- Many plastics
- High-energy surfaces. (These are surfaces on which round drops of water form.)
- Glass

### Proceed as follows:

- Only bond the FIX blocks to a clean surface. The surface must be free of grease, oil, silicone film, or dirt. It is not necessary to use a primer or roughen the surface beforehand.
- Bond the terminal blocks at a minimum temperature of +20°C, otherwise the maximum adhesive force will not be reached.
- Completely remove the protective cover.
- Press the terminal blocks onto the surface for approx. 2 s to 4 s.

The required contact pressure can be found in the list on the right or in the product documentation.

- i** At +20°C, the maximum adhesive force is reached after approx. 72 h. Heat accelerates the process. At +65°C, the maximum adhesive force is reached after 1 h.

- You can connect the conductors after pressing on the terminal block.

- i** Provide strain relief for the connected conductors after 10 cm.

### Required contact pressure:

FIX block		FIX block with feed-in connection	
<b>PTFIX, 1.5 mm<sup>2</sup></b>			
PTFIX 4X1,5-G ...	20 N		
PTFIX 6X1,5-G ...	36 N	PTFIX 4/6X1,5-G ...	60 N
PTFIX 12X1,5-G ...	76 N	PTFIX 4/12X1,5-G ...	100 N
PTFIX 18X1,5-G ...	115 N	PTFIX 4/18X1,5-G ...	140 N
<b>PTFIX, 2.5 mm<sup>2</sup></b>			
PTFIX 6X2,5-G ...	48 N	PTFIX 6/6X2,5-G ...	88 N
PTFIX 12X2,5-G ...	117 N	PTFIX 6/12X2,5-G ...	154 N
PTFIX 18X2,5-G ...	185 N	PTFIX 6/18X2,5-G ...	222 N
<b>PTFIX, 4 mm<sup>2</sup></b>			
PTFIX 6X4-G ...	75 N	PTFIX 10/6X4-G ...	120 N
PTFIX 12X4-G ...	165 N	PTFIX 10/12X4-G ...	210 N
PTFIX 18X4-G ...	250 N	PTFIX 10/18X4-G ...	300 N
<b>PTFIX, 10 mm<sup>2</sup></b>			
PTFIX 6X10/S-G ...	160 N		
<b>PTVFIX, 2.5 mm<sup>2</sup></b>			
PTVFIX 6X2,5-G ...	48 N	PTVFIX 6/6X2,5-G ...	88 N
PTVFIX 12X2,5-G ...	117 N	PTVFIX 6/12X2,5-G ...	154 N
PTVFIX 18X2,5-G ...	185 N	PTVFIX 6/18X2,5-G ...	222 N

## 10 FIX online configurator

You can use the FIX online configurator to combine FIX blocks for your application.

You can block these FIX blocks, fit them with mounting adapters, and mark them:

- Distribution blocks
- Single blocks
- Function distribution blocks
- Device terminal blocks

The FIX online configurator creates the following files:

- Data sheet
- 2D and 3D data with dimensions
- Marking data

The configurator automatically places the mounting adapters in accordance with the mounting rules. For direct mounting with flange, you can freely select the number and position of the adapters.

Once the configuration has been completed, you will receive a configuration ID and an order key, which you can use to call up and order your configuration again.

Figure 17 FIX configurator

